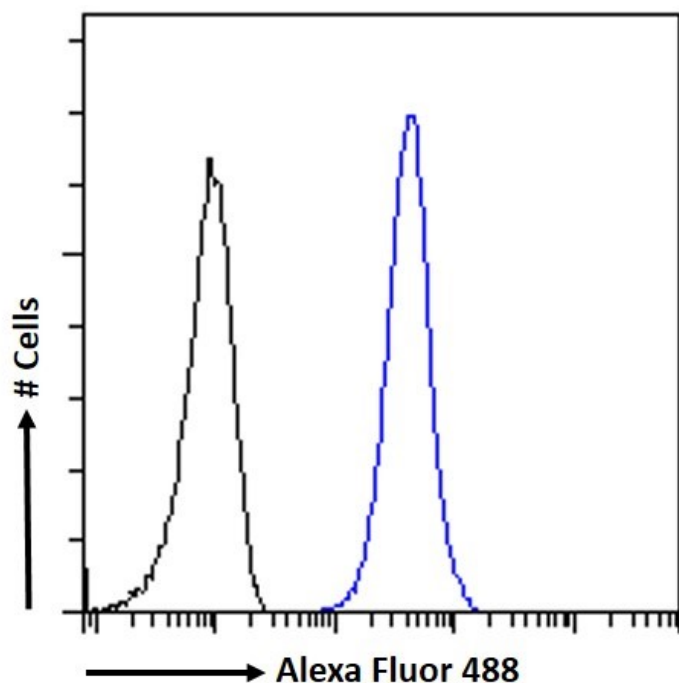


# GOAT ANTI-TICAM1 ANTIBODY

SKU: EB09579



## SPECIFICATIONS

<b>Formulation</b>	Supplied at 0.5 mg/ml in Tris saline, 0.02% sodium azide, pH7.3 with 0.5% bovine serum albumin.
<b>Unit Size</b>	100 µg
<b>Storage Instructions</b>	Aliquot and store at -20°C. Minimize freezing and thawing.
<b>Synonym / Alias Names</b>	TIR domain containing adaptor inducing interferon-beta TRIF TICAM-1 PRVTIRB MGC35334 toll-like receptor adaptor molecule 1 TICAM1
<b>Usage Summary</b>	<p>&lt;p&gt;&lt;strong&gt;Flow Cytometry:&lt;/strong&gt; Flow cytometric analysis of K562 cells. Recommended concentration: 10ug/ml.&lt;/p&gt;</p>
<b>Accession ID</b>	NP_891549.1
<b>Blocking Peptide</b>	EBP09579
<b>Immunogen</b>	Peptide with sequence C-HARADEHIALRVREK, from the internal region of the protein sequence according to NP_891549.1.

<b>Peptide Sequence</b>	C-HARADEHIALRVREK
<b>Purification Method</b>	Purified from goat serum by ammonium sulphate precipitation followed by antigen affinity chromatography using the immunizing peptide.
<b>Shipping Instructions</b>	Refrigerated
<b>Predicted Species</b>	Human
<b>Reactive Species</b>	Human
<b>Human Gene ID</b>	148022
<b>Product Grade</b>	<a href="https://prod-vector-labs-pimcore-assets.s3.us-east-1.amazonaws.com/assets/products/image/elite_plus_medium.png">https://prod-vector-labs-pimcore-assets.s3.us-east-1.amazonaws.com/assets/products/image/elite_plus_medium.png</a>
<b>IHC Results</b>	Paraffin embedded Human Small Intestine. Recommended concentration: 2.5µg/ml.
<b>ELISA</b>	
<b>Detection Limit</b>	Antibody detection limit dilution 1:64000.
<b>Application Type</b>	Pep-ELISA, FC, IHC

## GALLERY IMAGES

