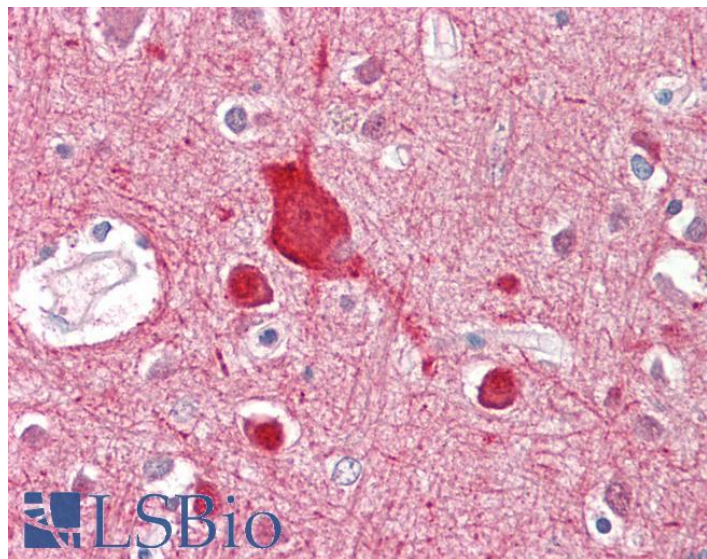


GOAT ANTI-ABCA2 ANTIBODY

SKU: EB08613



SPECIFICATIONS

Formulation Supplied at 0.5 mg/ml in Tris saline, 0.02% sodium azide, pH7.3 with 0.5% bovine serum albumin.

Unit Size 100 µg

Storage Instructions Aliquot and store at -20°C. Minimize freezing and thawing.

Synonym / Alias Names ABCA2|ATP-binding cassette, sub-family A (ABC1), member 2|ABC2|MGC129761|ATP-binding cassette, sub-family A, member 2|OTTHUMP00000064733

Accession ID NP_001597.2; NP_997698.1

Blocking Peptide EBP08613

Immunogen Peptide with sequence C-KKQSDNLEQQETEP, from the internal region of the protein sequence according to NP_001597.2; NP_997698.1.

Product Comments This antibody is expected to recognize both reported isoforms (NP_001597.2; NP_997698.1).

Peptide Sequence C-KKQSDNLEQQETEP

Purification Method Purified from goat serum by ammonium sulphate precipitation followed by antigen affinity chromatography using the immunizing peptide.

Shipping Instructions	Refrigerated
Predicted Species	Human, Mouse, Rat
Reactive Species	Human
Human Gene ID	20
Mouse Gene ID	11305
Rat Gene ID	79248
Product Grade	https://prod-vector-labs-pimcore-assets.s3.us-east-1.amazonaws.com/assets/products/image/elite_medium.png
IHC Results	Paraffin embedded Human Brain (Cortex). Recommended concentration: 3.75µg/ml.
ELISA	
Detection Limit	Antibody detection limit dilution 1:2000.
Western Blot	Preliminary experiments gave an approx 35kDa band in Human Brain (Amygdala, Frontal Cortex, Hippocampus and Substantia Nigra) lysates after 0.3µg/ml antibody staining. Please note that currently we cannot find an explanation in the literature for the band we observe given the calculated size of 270kDa according to NP_001597.2 and of 273kDa according to .NP_997698.1. The 35kDa band was successfully blocked by incubation with the immunizing peptide.
Application Type	Pep-ELISA, IHC

DOCUMENTS

- [Data Sheet](#)

GALLERY IMAGES

