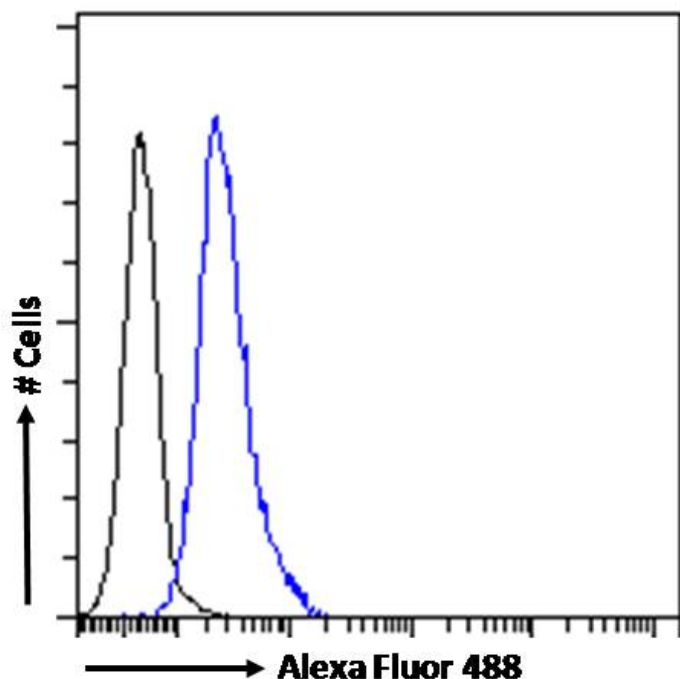


# GOAT ANTI-ABCA9 ANTIBODY

SKU: EB08619



## SPECIFICATIONS

**Formulation** Supplied at 0.5 mg/ml in Tris saline, 0.02% sodium azide, pH7.3 with 0.5% bovine serum albumin.

**Unit Size** 100 µg

**Storage Instructions** Aliquot and store at -20°C. Minimize freezing and thawing.

**Synonym / Alias Names** ATP-binding cassette, sub-family A, member 9|ATP-binding cassette A9|MGC75415|EST640918|DKFZp686F2450|ATP-binding cassette, sub-family A (ABC1), member 9|ABCA9

**Usage Summary** <strong>Flow Cytometry:</strong> Flow cytometric analysis of HEK293 cells. Recommended concentration: 10ug/ml.

**Accession ID** NP\_525022.2

**Blocking Peptide** EBP08619

**Immunogen** Peptide with sequence C-QRVVQELEMENIQD, from the internal region of the protein sequence according to NP\_525022.2.

<b>Peptide Sequence</b>	C-QRVVQELEMENIQD
<b>Purification Method</b>	Purified from goat serum by ammonium sulphate precipitation followed by antigen affinity chromatography using the immunizing peptide.
<b>Shipping Instructions</b>	Refrigerated
<b>Predicted Species</b>	Human
<b>Reactive Species</b>	Human
<b>Human Gene ID</b>	10350
<b>Product Grade</b>	<a href="https://prod-vector-labs-pimcore-assets.s3.us-east-1.amazonaws.com/assets/products/image/elite_plus_medium.png">https://prod-vector-labs-pimcore-assets.s3.us-east-1.amazonaws.com/assets/products/image/elite_plus_medium.png</a>
<b>IHC Results</b>	Paraffin embedded Human Testis. Recommended concentration: 5µg/ml.
<b>ELISA</b>	
<b>Detection Limit</b>	Antibody detection limit dilution 1:128000.
<b>Application Type</b>	Pep-ELISA, FC, IHC

## DOCUMENTS

- [Data Sheet](#)

## GALLERY IMAGES

