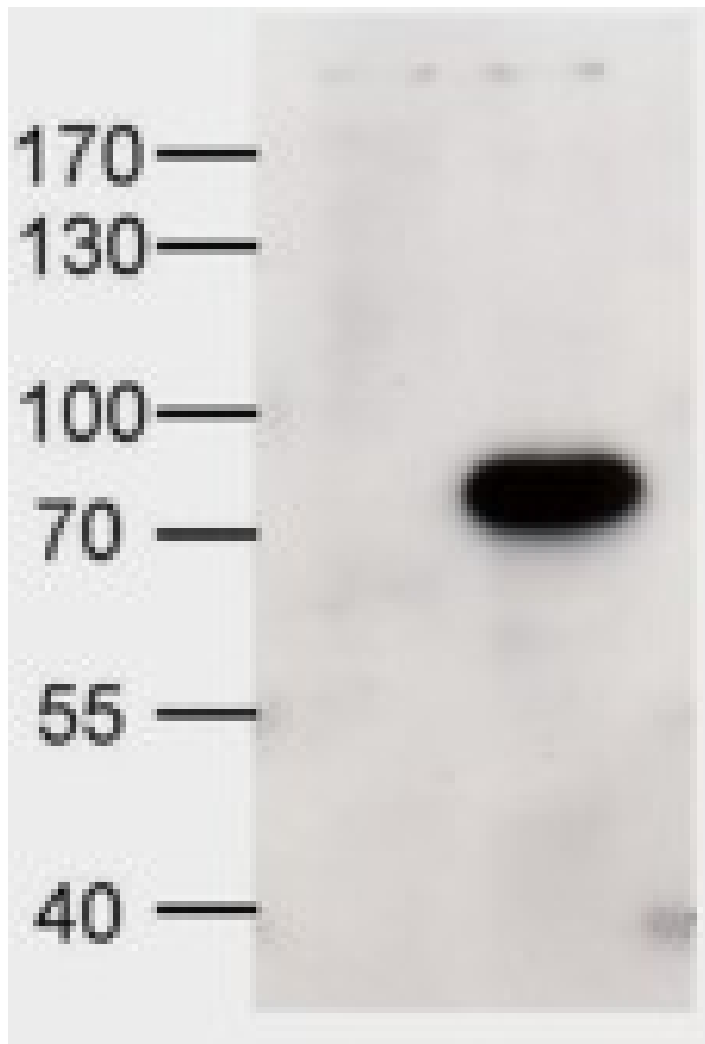


GOAT ANTI-ABCD1 ANTIBODY

SKU: EB08708



SPECIFICATIONS

Formulation Supplied at 0.5 mg/ml in Tris saline, 0.02% sodium azide, pH7.3 with 0.5% bovine serum albumin.

Unit Size 100 µg

Storage Aliquot and store at -20°C. Minimize freezing and thawing.

Instructions

Synonym / Alias Names	ABCD1 ATP-binding cassette, sub-family D (ALD), member 1 ABC42 ALD ALDP AMN adrenoleukodystrophy protein
Accession ID	NP_000024.2
Blocking Peptide	EBP08708
Immunogen	Peptide with sequence C-EDMQRKGYSEQD, from the internal region of the protein sequence according to NP_000024.2.
Peptide Sequence	C-EDMQRKGYSEQD
Purification Method	Purified from goat serum by ammonium sulphate precipitation followed by antigen affinity chromatography using the immunizing peptide.
Shipping Instructions	Refrigerated
Predicted Species	Human
Reactive Species	Human
Human Gene ID	215
Product Grade	https://prod-vector-labs-pimcore-assets.s3.us-east-1.amazonaws.com/assets/products/image/elite_medium.png
ELISA Detection Limit	Antibody detection limit dilution 1:32000.
Western Blot	Preliminary experiments gave an approx. 50kDa band in Human Brain (Cerebellum) lysates after 1µg/ml antibody staining. Please note that currently we cannot find an explanation in the literature for the band we observe given the calculated size of 82.9kDa according to NP_000024.2. The 50kDa band was successfully blocked by incubation with the immunizing peptide. We would appreciate any feedback from people in the field - have any results been reported with other antibodies/lysates? Have any further splice variants/modified forms been reported?
Application Type	Pep-ELISA, WB

DOCUMENTS

- [Data Sheet](#)

GALLERY IMAGES

