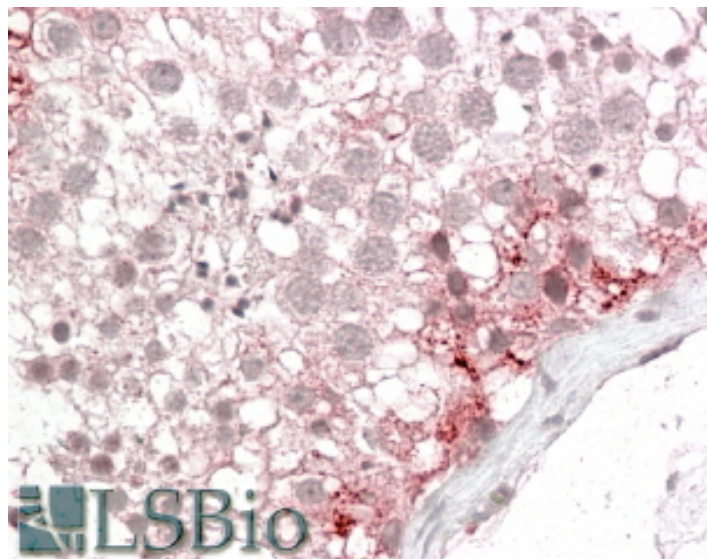


GOAT ANTI-ABCD3 ANTIBODY

SKU: EB08710



SPECIFICATIONS

Formulation	Supplied at 0.5 mg/ml in Tris saline, 0.02% sodium azide, pH7.3 with 0.5% bovine serum albumin.
Unit Size	100 µg
Storage Instructions	Aliquot and store at -20°C. Minimize freezing and thawing.
Synonym / Alias Names	peroxisomal membrane protein 1 (70kD, Zellweger syndrome) dj824O18.1 (ATP-binding cassette, sub-family D (ALD), member 3 (PMP70, PXMP1)) Peroxisomal membrane protein-1 (70kD) ATP-binding cassette, sub-family D, member 3 PXMP1 PMP70 ABC43 ATP-binding cassette, sub-family D (ALD), member 3 ABCD3
Usage Summary	Flow Cytometry: Flow cytometric analysis of A431 cells. Recommended concentration: 10ug/ml.
Accession ID	NP_002849.1
Blocking Peptide	EBP08710
Immunogen	Peptide with sequence C-PDGREDQKRKGISD, from the internal region of the protein sequence according to NP_002849.1.
Product Comments	This antibody is expected to recognize one isoform (NP_002849.1) only.
Peptide Sequence	C-PDGREDQKRKGISD

Purification Method	Purified from goat serum by ammonium sulphate precipitation followed by antigen affinity chromatography using the immunizing peptide.
Shipping Instructions	Refrigerated
Predicted Species	Human, Mouse, Rat
Reactive Species	Human
Human Gene ID	5825
Mouse Gene ID	19299
Rat Gene ID	25270
Product Grade	https://prod-vector-labs-pimcore-assets.s3.us-east-1.amazonaws.com/assets/products/image/elite_plus_medium.png
IHC Results	In paraffin embedded Human Testis shows vesicular staining in Sertoli cells. Recommended concentration: 2.5-3.8µg/ml.
ELISA	
Detection Limit	Antibody detection limit dilution 1:16000.
Application Type	Pep-ELISA, FC, IHC

DOCUMENTS

- [Safety Data Sheet](#)

GALLERY IMAGES

