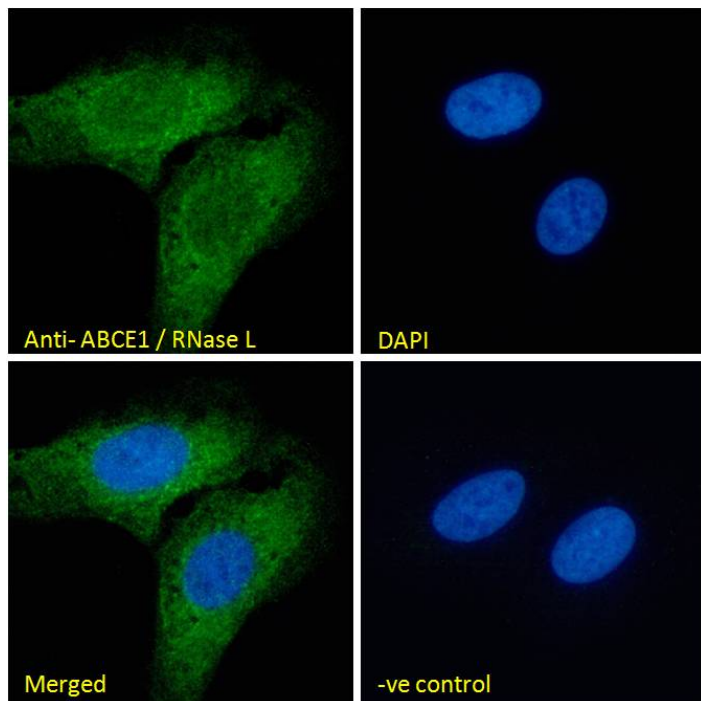


GOAT ANTI-ABCE1 / RNASE L ANTIBODY

SKU: EB08737



SPECIFICATIONS

Formulation Supplied at 0.5 mg/ml in Tris saline, 0.02% sodium azide, pH7.3 with 0.5% bovine serum albumin.

Unit Size 100 µg

Storage Instructions Aliquot and store at -20°C. Minimize freezing and thawing.

Synonym / Alias Names ribonuclease L (2\1, 5\1-oligoadenylate synthetase-dependent) inhibitor|RNase L inhibitor|ATP-binding cassette, sub-family E, member 1|RNS4|RNASEL|RNASEL1|RLI|OABP|ABC38|ATP-binding cassette, sub-family E (OABP), member 1|ABCE1

Usage Summary **Immunofluorescence:** Strong expression of the protein seen in the cytoplasm of A431 and U2OS cells. Recommended concentration: 10µg/ml. **Flow Cytometry:** Flow cytometric analysis of A431 cells. Recommended concentration: 10ug/ml.

Accession ID NP_002931.2; NP_001035809.1

Blocking Peptide EBP08737

Immunogen	Peptide with sequence NHDKCKPKKCRQEC, from the N Terminus of the protein sequence according to NP_002931.2; NP_001035809.1.
Peptide Sequence	NHDKCKPKKCRQEC
Purification Method	Purified from goat serum by ammonium sulphate precipitation followed by antigen affinity chromatography using the immunizing peptide.
Shipping Instructions	Refrigerated
Predicted Species	Human, Mouse, Rat, Dog, Cow
Reactive Species	Human
Human Gene ID	6059
Mouse Gene ID	24015
Rat Gene ID	361390
Product Grade	https://prod-vector-labs-pimcore-assets.s3.us-east-1.amazonaws.com/assets/products/image/elite_plus_medium.png
ELISA Detection Limit	Antibody detection limit dilution 1:32000.
Western Blot	Approx 70kDa band observed in Human Tonsil lysates and in preliminary testing of Human Ovary lysate (calculated MW of 67.3kDa according to Human NP_002931.2). Recommended concentration: 1-2ug/ml. Primary incubation 1 hour at room temperature.
Application Type	Pep-ELISA, WB, IF, FC

DOCUMENTS

- [Data Sheet](#)

GALLERY IMAGES

