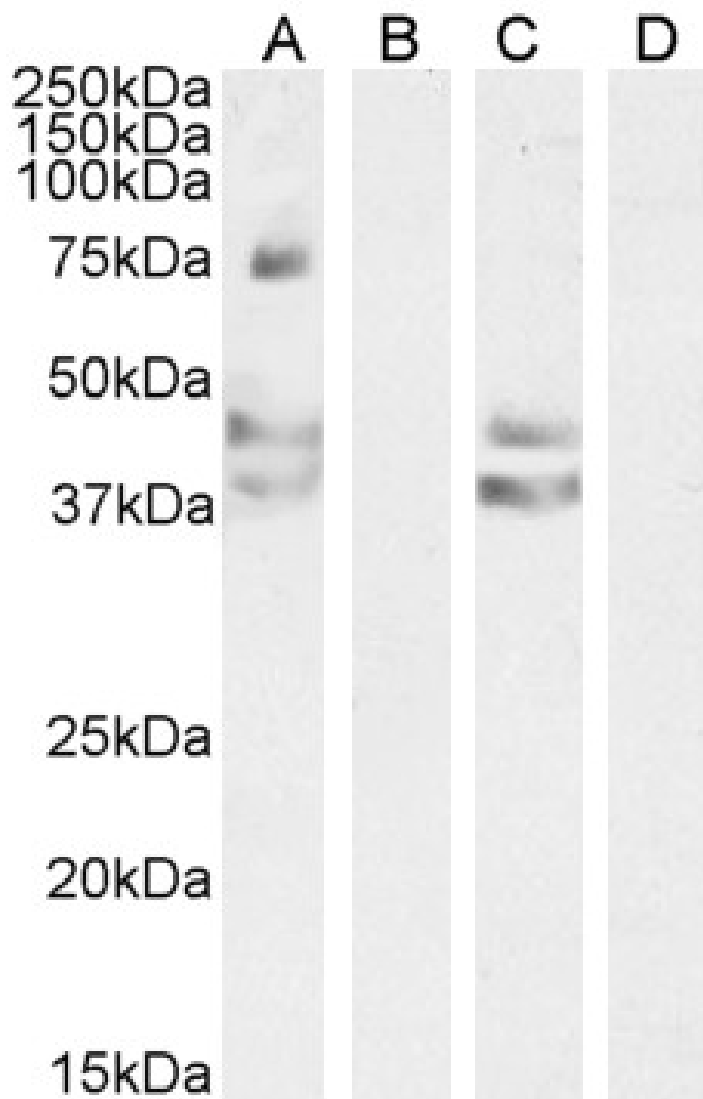


## GOAT ANTI-AGTR1 / AT1 ANTIBODY

**SKU:** EB07446



---

## SPECIFICATIONS

**Formulation** Supplied at 0.5 mg/ml in Tris saline, 0.02% sodium azide, pH7.3 with 0.5% bovine serum albumin.

**Unit Size** 100 µg

<b>Storage Instructions</b>	Aliquot and store at -20°C. Minimize freezing and thawing.
<b>Synonym / Alias Names</b>	type-1B angiotensin II receptor angiotensin receptor 1B angiotensin receptor 1 HAT1R AT2R1B AT2R1A AT2R1 AT1B AGTR1B AGTR1A AG2S angiotensin II receptor, type 1 AT1 AGTR1
<b>Accession ID</b>	NP_000676.1; NP_004826.2; NP_033611.1; NP_114038.1; NP_114438.1
<b>Blocking Peptide</b>	EBP07446
<b>Immunogen</b>	Peptide with sequence C-EIQKNKPRNDDIFK, from the internal region of the protein sequence according to NP_000676.1; NP_004826.2; NP_033611.1; NP_114038.1; NP_114438.1.
<b>Product Comments</b>	All reported variants represent identical protein (NP_000676.1, NP_004826.2, NP_033611.1, NP_114038.1 and NP_114438.1).
<b>Peptide Sequence</b>	C-EIQKNKPRNDDIFK
<b>Purification Method</b>	Purified from goat serum by ammonium sulphate precipitation followed by antigen affinity chromatography using the immunizing peptide.
<b>Shipping Instructions</b>	Refrigerated
<b>Predicted Species</b>	Human, Mouse
<b>Reactive Species</b>	Human, Mouse
<b>Human Gene ID</b>	185
<b>Mouse Gene ID</b>	11607
<b>Rat Gene ID</b>	24180
<b>Product Grade</b>	<a href="https://prod-vector-labs-pimcore-assets.s3.us-east-1.amazonaws.com/assets/products/image/elite_medium.png">https://prod-vector-labs-pimcore-assets.s3.us-east-1.amazonaws.com/assets/products/image/elite_medium.png</a>
<b>ELISA Detection Limit</b>	Antibody detection limit dilution 1:32000.
<b>Western Blot</b>	Approx 38kDa band observed in Human and Mouse Liver lysates (calculated MW of 41.1kDa according to Human NP_000676.1 and 40.9kDa according to Mouse NP_796296.1) Additional bands of unknown identity were also observed at 45 and 75kDa and were successfully blocked by incubation with the immunizing peptide. Recommended concentration: 0.1-0.3µg/ml. Primary incubation 1 hour at room temperature. Preliminary testing was unsuccessful on Rat Liver for this particular batch.
<b>Application Type</b>	Pep-ELISA, WB

## DOCUMENTS

- [Data Sheet](#)

## GALLERY IMAGES

