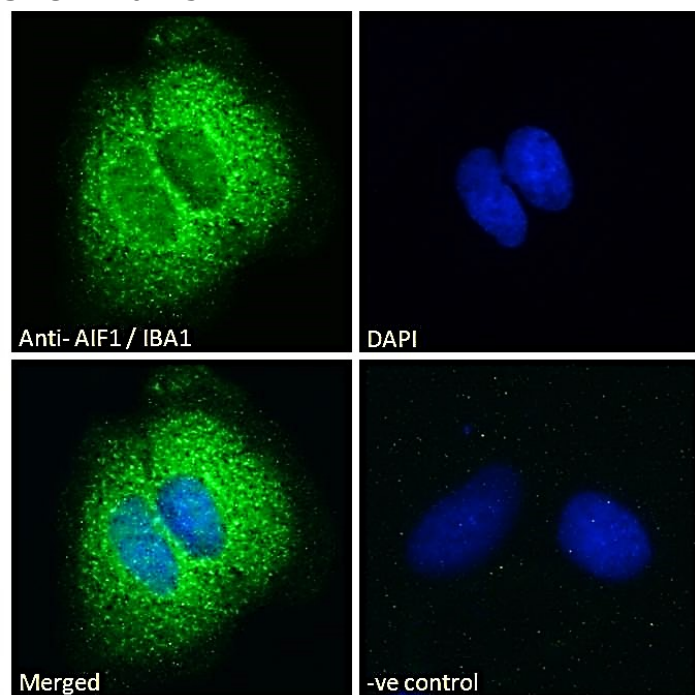


GOAT ANTI-AIF1 / IBA1 (ISOFORMS 1 + 3) ANTIBODY

SKU: EB07257



SPECIFICATIONS

Formulation Supplied at 0.5 mg/ml in Tris saline, 0.02% sodium azide, pH7.3 with 0.5% bovine serum albumin.

Unit Size 100 µg

Storage Instructions Aliquot and store at -20°C. Minimize freezing and thawing.

Synonym / Alias Names ionized calcium-binding adapter molecule|interferon gamma responsive transcript|Em:AF129756.17|IRT-1|AIF-1|DASS-82G15.2|allograft inflammatory factor 1|IBA1|AIF1

Usage Summary **Flow Cytometry:** Flow cytometric analysis of K562 cells. Recommended concentration: 10ug/ml. **Immunofluorescence:** Strong expression of the protein seen in the cytoplasm of CaCo-2 cells. Recommended concentration: 10µg/ml.

Accession ID NP_116573.1; NP_001614.3

Blocking Peptide EBP07257

Immunogen Peptide with sequence C-YEEKAREKEKP, from the C Terminus of the protein sequence according to NP_116573.1; NP_001614.3.

Product Comments	This antibody is expected to recognise isoform 1 (NP_116573.1) and isoform 3 (NP_001614.3).
Peptide Sequence	C-YEEKAREKEKP
Purification Method	Purified from goat serum by ammonium sulphate precipitation followed by antigen affinity chromatography using the immunizing peptide.
Shipping Instructions	Refrigerated
Predicted Species	Human
Reactive Species	Human
Human Gene ID	199
Product Grade	https://prod-vector-labs-pimcore-assets.s3.us-east-1.amazonaws.com/assets/products/image/elite_plus_medium.png
IHC Results	In paraffin embedded Human Cerebellum shows staining of astrocytes. Recommended concentration, 2-4µg/ml.
ELISA	
Detection Limit	Antibody detection limit dilution 1:16000.
Application Type	Pep-ELISA, FC, IF, IHC

DOCUMENTS

- [Data Sheet](#)

GALLERY IMAGES

