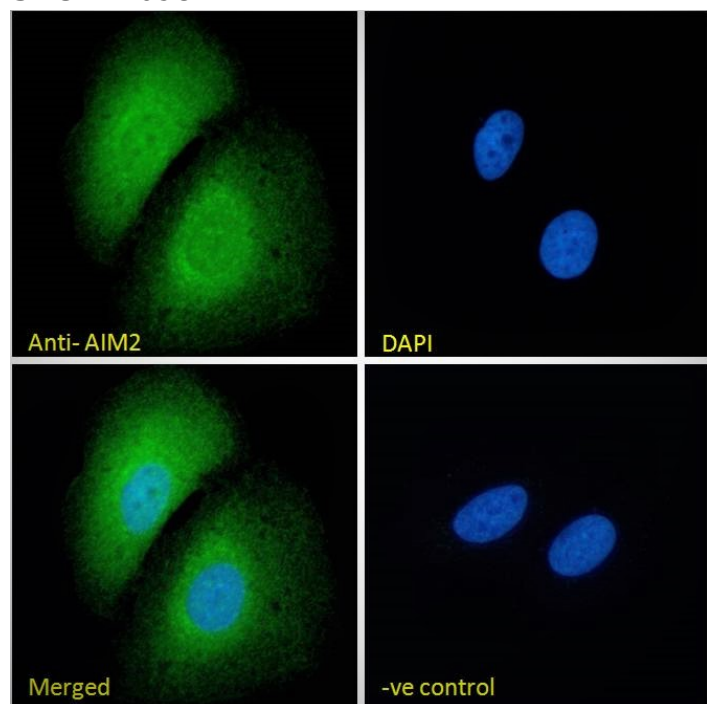


# GOAT ANTI-AIM2 ANTIBODY

SKU: EB09874



## SPECIFICATIONS

<b>Formulation</b>	Supplied at 0.5 mg/ml in Tris saline, 0.02% sodium azide, pH7.3 with 0.5% bovine serum albumin.
<b>Unit Size</b>	100 µg
<b>Storage</b>	
<b>Instructions</b>	Aliquot and store at -20°C. Minimize freezing and thawing.
<b>Synonym /</b>	
<b>Alias</b>	AIM2 PYHIN4 absent in melanoma 2
<b>Names</b>	
<b>Usage</b>	<strong>Immunofluorescence:</strong> Strong expression of the protein seen in U2OS and HeLa cells.
<b>Summary</b>	Recommended concentration: 10µg/ml. <strong>Flow Cytometry:</strong> Flow cytometric analysis of HeLa cells. Recommended concentration: 10ug/ml.
<b>Accession ID</b>	NP_004824.1; NP_001335176.1
<b>Blocking Peptide</b>	EBP09874

<b>Immunogen</b>	Peptide with sequence C-GEKLQLTSGVHSTIK, from the C Terminus of the protein sequence according to NP_004824.1; NP_001335176.1.
<b>Peptide Sequence</b>	C-GEKLQLTSGVHSTIK
<b>Purification Method</b>	Purified from goat serum by ammonium sulphate precipitation followed by antigen affinity chromatography using the immunizing peptide.
<b>Shipping Instructions</b>	Refrigerated
<b>Predicted Species</b>	Human
<b>Reactive Species</b>	Human
<b>Human Gene ID</b>	9447
<b>Product Grade</b>	<a href="https://prod-vector-labs-pimcore-assets.s3.us-east-1.amazonaws.com/assets/products/image/elite_plus_medium.png">https://prod-vector-labs-pimcore-assets.s3.us-east-1.amazonaws.com/assets/products/image/elite_plus_medium.png</a>
<b>IHC Results</b>	In paraffin embedded Human Spleen shows nucleolar staining in some splenocytes. Recommended concentration: 4-6µg/ml.
<b>ELISA Detection Limit</b>	Antibody detection limit dilution 1:8000.
<b>Western Blot</b>	Approx 37kDa band observed in lysates of cell line HeLa (calculated MW of 39.0kDa according to Human NP_004824.1). Recommended concentration: 0.5-1ug/ml. Primary incubation 1 hour at room temperature.
<b>Application Type</b>	Pep-ELISA, WB, IHC, IF, FC

## DOCUMENTS

- [Data Sheet](#)

## GALLERY IMAGES

