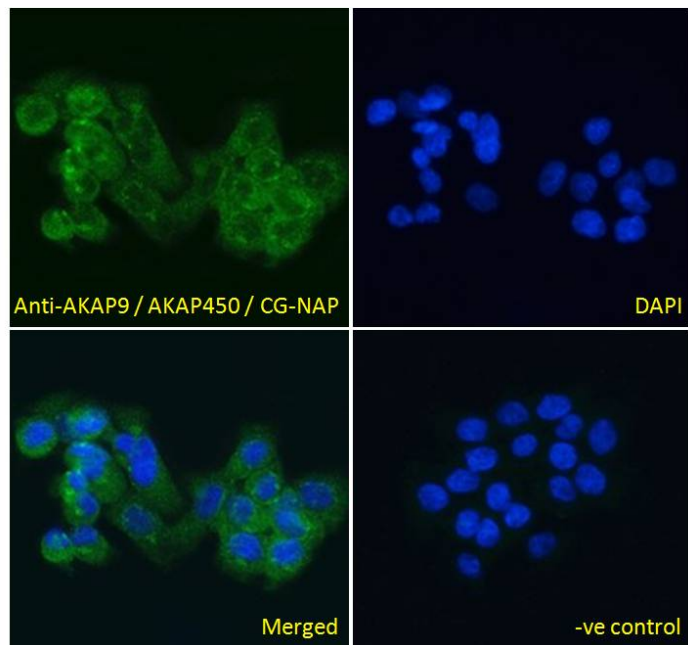


# GOAT ANTI-AKAP9 / AKAP450 / CG-NAP ANTIBODY

SKU: EB06654



## SPECIFICATIONS

**Formulation** Supplied at 0.5 mg/ml in Tris saline, 0.02% sodium azide, pH7.3 with 0.5% bovine serum albumin.

**Unit Size** 100 µg

**Storage Instructions** Aliquot and store at -20°C. Minimize freezing and thawing.

**Synonym / Alias Names** AKAP9-BRAF fusion protein|A-kinase anchor protein 9|MU-RMS-40.16A|AKAP450|centrosome- and golgi-localized protein|protein kinase A anchoring protein 9|A-kinase anchor protein, 350kDa|A-kinase anchoring protein 450|kinase N-associated protein|AKAP120-like protein|A kinase (PRKA) anchor protein (yotiao) 9|KIAA0803|HYPERION|AKAP350|YOTIAO|PRKA9|CG-NAP|AKAP9

**Usage Summary** <strong>Immunofluorescence:</strong> Strong expression of the protein seen in the cytoplasm of A431 and U2OS cells. Recommended concentration: 10µg/ml.

**Accession ID** NP\_005742.4; NP\_671714.1

**Blocking Peptide** EBP06654

**Immunogen** Peptide with sequence C-SGSTTQFHAGMR, from the C Terminus of the protein sequence according to NP\_005742.4; NP\_671714.1.

<b>Product</b>	This antibody is expected to recognise isoforms 2 and 3 (NP_005742.4; NP_671714.1 respectively). The
<b>Comments</b>	isoforms Yotiao, AKAP350B and AKAP350C are not recognized.
<b>Peptide Sequence</b>	C-SGSTTQFHAGMR
<b>Purification Method</b>	Purified from goat serum by ammonium sulphate precipitation followed by antigen affinity chromatography using the immunizing peptide.
<b>Shipping Instructions</b>	Refrigerated
<b>Predicted Species</b>	Human, Mouse
<b>Reactive Species</b>	Human
<b>Human Gene ID</b>	10142
<b>Product Grade</b>	<a href="https://prod-vector-labs-pimcore-assets.s3.us-east-1.amazonaws.com/assets/products/image/elite_medium.png">https://prod-vector-labs-pimcore-assets.s3.us-east-1.amazonaws.com/assets/products/image/elite_medium.png</a>
<b>ELISA Detection Limit</b>	Antibody detection limit dilution 1:64000.
<b>Western Blot</b>	This product has been successfully used by a customer, showing a band at approx 450kDa in lysates of cell line HepG2 (calculated MW of 453kDa according to NP_005742.4). Recommended concentration: 1-3µg/ml.
<b>Application Type</b>	Pep-ELISA, WB, IF

## DOCUMENTS

- [Data Sheet](#)

## GALLERY IMAGES

