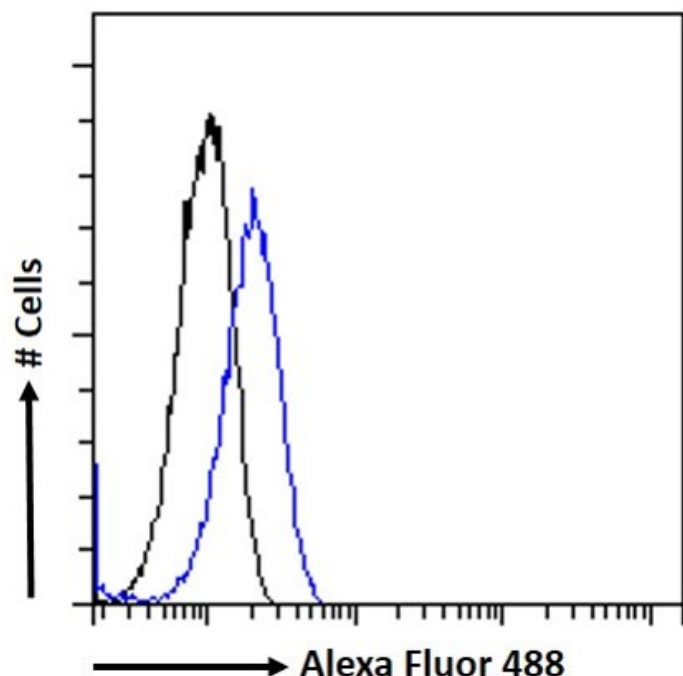


GOAT ANTI-AKT1 ANTIBODY

SKU: EB07691



SPECIFICATIONS

Formulation	Supplied at 0.5 mg/ml in Tris saline, 0.02% sodium azide, pH7.3 with 0.5% bovine serum albumin.
Unit Size	100 µg
Storage Instructions	Aliquot and store at -20°C. Minimize freezing and thawing.
Synonym / Alias Names	rac protein kinase alpha protein kinase B murine thymoma viral (v-akt) oncogene homolog-1 RAC-alpha serine/threonine-protein kinase RAC-ALPHA RAC PRKBA PKB MGC99656 AKT v-akt murine thymoma viral oncogene homolog 1 AKT1
Usage Summary	Immunofluorescence: Strong expression of the protein seen in the microtubules/cytoplasm of HeLa cells. Recommended concentration: 10µg/ml. Flow Cytometry: Flow cytometric analysis of MCF7 cells. Recommended concentration: 10ug/ml.
Accession ID	NP_005154.2; NP_001014431.1; NP_001014432.1
Blocking Peptide	EBP07691

Immunogen	Peptide with sequence C-QDVDQREAPLN, from the internal region of the protein sequence according to NP_005154.2; NP_001014431.1; NP_001014432.1.
Product Comments	All variants represent identical protein (NP_005154.2, NP_001014431.1, NP_001014432.1). This antibody is NOT expected to cross-react with AKT2. It may recognize AKT1 in Rat and Dog.
Peptide Sequence	C-QDVDQREAPLN
Purification Method	Purified from goat serum by ammonium sulphate precipitation followed by antigen affinity chromatography using the immunizing peptide.
Shipping Instructions	Refrigerated
Predicted Species	Human, Mouse
Reactive Species	Human
Human Gene ID	207
Product Grade	https://prod-vector-labs-pimcore-assets.s3.us-east-1.amazonaws.com/assets/products/image/elite_plus_medium.png
ELISA Detection Limit	Antibody detection limit dilution 1:32000.
Western Blot	Approx 60kDa band observed in MCF7 cell lysates and approx. 55kDa in preliminary testing of K562 and NIH3T3 cell lysate (calculated MW of 55.7kDa according to NP_005154.2). These molecular weights are observed by other commercial sources. Recommended concentration: 0.1-0.3ug/ml. Primary incubation 1 hour at room temperature.
Application Type	Pep-ELISA, WB, IF, FC

DOCUMENTS

- [Data Sheet](#)

GALLERY IMAGES

