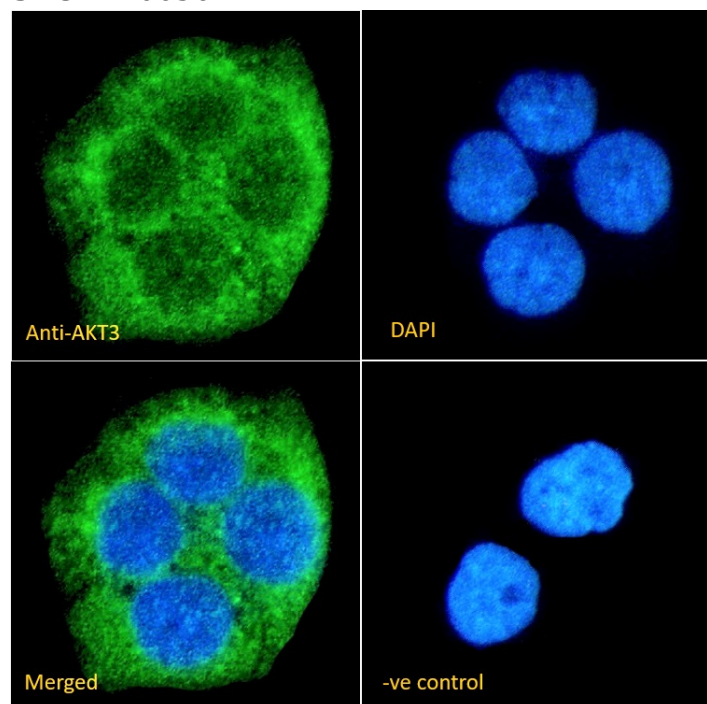


GOAT ANTI-AKT3 ANTIBODY

SKU: EB06562



SPECIFICATIONS

Formulation Supplied at 0.5 mg/ml in Tris saline, 0.02% sodium azide, pH7.3 with 0.5% bovine serum albumin.

Unit Size 100 µg

Storage Instructions Aliquot and store at -20°C. Minimize freezing and thawing.

Synonym / Alias Names RAC-gamma serine/threonine protein kinase|serine threonine protein kinase, Akt-3|protein kinase B gamma|v-akt murine thymoma viral oncogene homolog 3 (protein kinase B, gamma)|DKFZP434N0250|RAC-PK-gamma|RAC-gamma|STK-2|PRKBG|PKBG|AKT3

Usage Summary **Immunofluorescence:** Strong expression of the protein seen in THP-1 and A431 cells. Recommended concentration: 10µg/ml. **Flow Cytometry:** Flow cytometric analysis of HepG2 cells. Recommended concentration: 10ug/ml.

Accession ID NP_005456.1; NP_859029.1

Blocking Peptide EBP06562

Immunogen	Peptide with sequence CSPTSQIDNIGEEEM, from the internal region of the protein sequence according to NP_005456.1; NP_859029.1.
Product Comments	This antibody is expected to recognise an epitope corresponding to aa 119-133 of both isoforms of human AKT3 protein. This antibody does not cross-react with human AKT1/2. Reported variants represent identical protein (NP_859029.1; NP_001193658.1).
Peptide Sequence	CSPTSQIDNIGEEEM
Purification Method	Purified from goat serum by ammonium sulphate precipitation followed by antigen affinity chromatography using the immunizing peptide.
Shipping Instructions	Refrigerated
Predicted Species	Human, Mouse, Rat, Dog, Cow
Reactive Species	Human, Mouse, Rat
Human Gene ID	10000
Product Grade	https://prod-vector-labs-pimcore-assets.s3.us-east-1.amazonaws.com/assets/products/image/elite_plus_medium.png
IHC Results	Paraffin embedded Human Prostate and Heart. Recommended concentration: 5µg/ml.
ELISA Detection Limit	Antibody detection limit dilution 1:16000.
Western Blot	Approx. 50-55kDa band observed in lysates of cell lines HepG2, and HeLa , approx. 55kDa in Human Thyroid lysates, and approx. 50kDa in Mouse and Rat Brain lysates (calculated MW of 54.0kDa according to Human NP_859029.1 and 55.7kDa according to Mouse NP_035915.3 and Rat NP_113763.2). Recommended concentration: 1-3µg/ml. Primary incubation 1 hour at room temperature. Positive Control: A batch specific positive control lysate is available for this product. Please contact Sales@everestbiotech.com for availability.
Application Type	Pep-ELISA, WB, IHC, IF, FC

DOCUMENTS

- [Data Sheet](#)

GALLERY IMAGES

