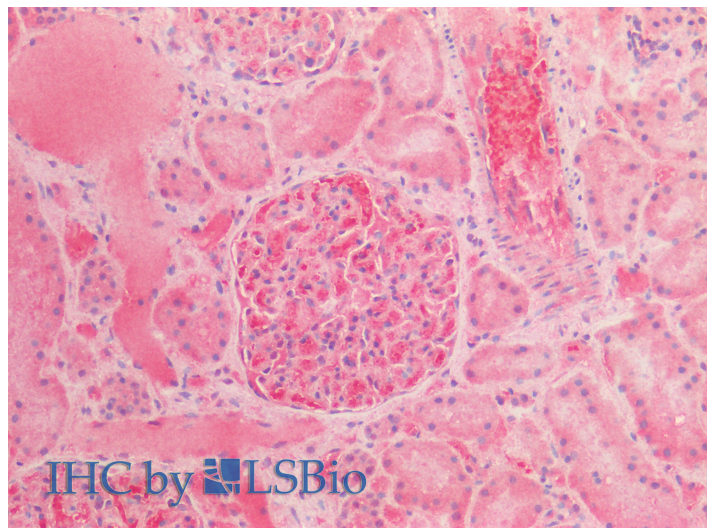


GOAT ANTI-ALPHA-FETOPROTEIN (AA68-82) ANTIBODY

SKU: EB12346



SPECIFICATIONS

Formulation Supplied at 0.5 mg/ml in Tris saline, 0.02% sodium azide, pH7.3 with 0.5% bovine serum albumin.

Unit Size 100 µg

Storage Instructions Aliquot and store at -20°C. Minimize freezing and thawing.

Synonym /

Alias Names alpha-fetoglobulin|alpha-1-fetoprotein|HPAFP|FETA|alpha-fetoprotein|AFP

Accession ID NP_001125.1

Blocking Peptide EBP12346

Immunogen Peptide with sequence C-KDALTAIEKPTGDEQ, from the internal region of the protein sequence according to NP_001125.1.

Peptide Sequence C-KDALTAIEKPTGDEQ

Purification Method Purified from goat serum by ammonium sulphate precipitation followed by antigen affinity chromatography using the immunizing peptide.

Shipping Instructions Refrigerated

| | |
|--------------------------|---|
| Predicted Species | Human |
| Reactive Species | Human |
| Human Gene ID | 174 |
| Product Grade | https://prod-vector-labs-pimcore-assets.s3.us-east-1.amazonaws.com/assets/products/image/elite_medium.png |
| IHC Results | Paraffin embedded Human Kidney. Recommended concentration: 5µg/ml. |
| ELISA | |
| Detection Limit | Antibody detection limit dilution 1:128000. |
| Western Blot | Approx 70kDa band observed in lysates of cell line HepG2 (calculated MW of 68.7kDa according to NP_001125.1). Recommended concentration: 0.3-1µg/ml. |
| Application Type | Pep-ELISA, WB, IHC |

DOCUMENTS

- [Data Sheet](#)

GALLERY IMAGES

