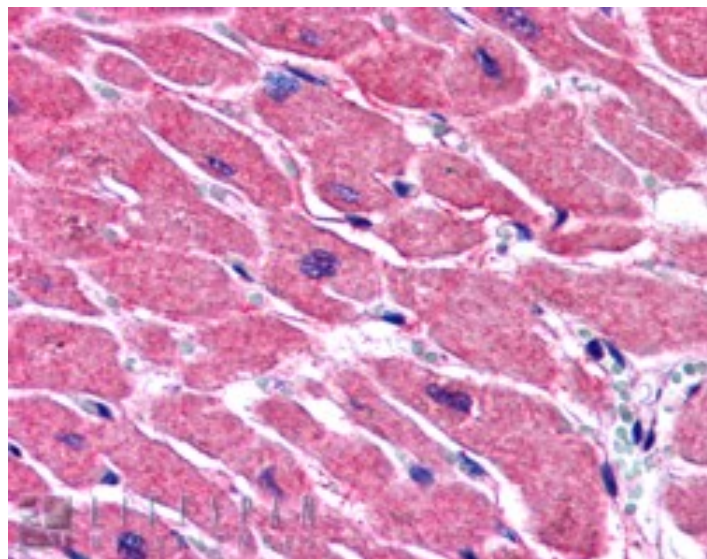


# GOAT ANTI-ALS2CR2 / ILPIP ANTIBODY

**SKU:** EB05865



## SPECIFICATIONS

<b>Formulation</b>	Supplied at 0.5 mg/ml in Tris saline, 0.02% sodium azide, pH7.3 with 0.5% bovine serum albumin.
<b>Unit Size</b>	100 µg
<b>Storage Instructions</b>	Aliquot and store at -20°C. Minimize freezing and thawing.
<b>Synonym / Alias Names</b>	pseudokinase ALS2CR2 STRAD beta STE20-related kinase adaptor beta ILP-interacting protein ILPIPA amyotrophic lateral sclerosis 2 (juvenile) chromosome region, candidate 2 PRO1038 CALS-21 ILPIPA PAPK ILPIP ALS2CR2 STRADB
<b>Usage Summary</b>	<strong>Immunofluorescence:</strong> Strong expression of the protein seen in the nuclei and cytoplasm of U251 cells. Recommended concentration: 10µg/ml.
<b>Accession ID</b>	NP_061041.2; AAF71042.1
<b>Blocking Peptide</b>	EBP05865
<b>Immunogen</b>	Peptide with sequence CDFPDEKDSYWEF, from the C Terminus of the protein sequence according to NP_061041.2; AAF71042.1.
<b>Product Comments</b>	This is expected to recognise both human isoforms: ILPIP-alpha (NP_061041.2) and ILPIP-beta (AAF71042.1).
<b>Peptide Sequence</b>	CDFPDEKDSYWEF

<b>Purification Method</b>	Purified from goat serum by ammonium sulphate precipitation followed by antigen affinity chromatography using the immunizing peptide.
<b>Shipping Instructions</b>	Refrigerated
<b>Predicted Species</b>	Human, Dog, Cow
<b>Reactive Species</b>	Human
<b>Human Gene ID</b>	55437
<b>Product Grade</b>	<a href="https://prod-vector-labs-pimcore-assets.s3.us-east-1.amazonaws.com/assets/products/image/elite_plus_medium.png">https://prod-vector-labs-pimcore-assets.s3.us-east-1.amazonaws.com/assets/products/image/elite_plus_medium.png</a>
<b>IHC Results</b>	In paraffin embedded Human Heart shows staining of myocardial fibres in transverse section. Recommended concentration: 3-5µg/ml.
<b>ELISA Detection Limit</b>	Antibody detection limit dilution 1:32000.
<b>Western Blot</b>	Approx 35kDa band observed in Human Heart, Liver and Muscle lysates (calculated MW of 47.0kDa according to NP_061041.2 (alpha isoform) and 31.2kDa according to AAF71042.1 (beta isoform). In transfected HEK293 transiently expressing ILPIP a band of approx. 48kDa is observed. This band is not observed in the non-transfected HEK293. Recommended concentration: 1-3µg/ml.
<b>Application Type</b>	Pep-ELISA, WB, IHC, IF

## DOCUMENTS

- [Data Sheet](#)

## GALLERY IMAGES

