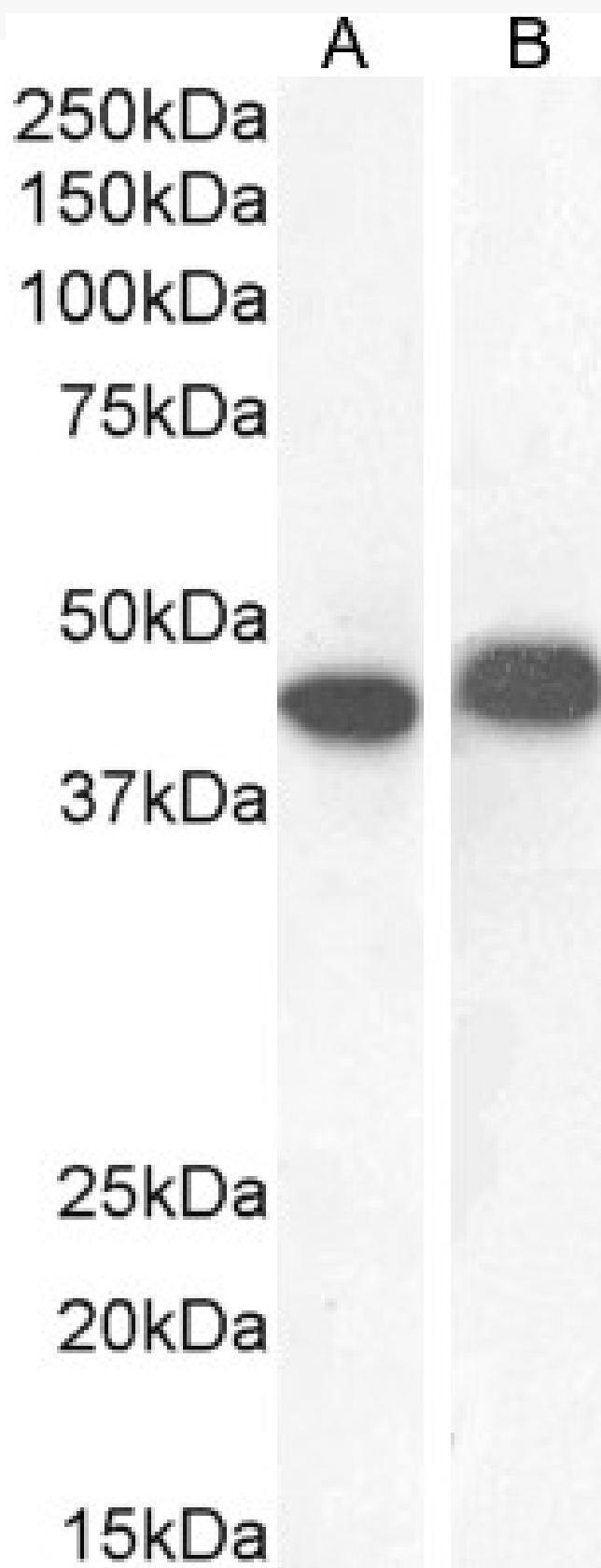


# GOAT ANTI-AMACR (AA312-326) ANTIBODY

**SKU:** EB12539



## SPECIFICATIONS

<b>Formulation</b>	Supplied at 0.5 mg/ml in Tris saline, 0.02% sodium azide, pH7.3 with 0.5% bovine serum albumin.
<b>Unit Size</b>	100 µg
<b>Storage Instructions</b>	Aliquot and store at -20°C. Minimize freezing and thawing.
<b>Synonym / Alias Names</b>	2-methylacyl-CoA racemase RM RACE CBAS4 AMACRD alpha-methylacyl-CoA racemase AMACR
<b>Accession ID</b>	NP_055139.4; NP_001161067.1
<b>Blocking Peptide</b>	EBP12539
<b>Immunogen</b>	Peptide with sequence C-RGSFITSEEQDVSPR, from the internal region of the protein sequence according to NP_055139.4; NP_001161067.1.
<b>Peptide Sequence</b>	C-RGSFITSEEQDVSPR
<b>Purification Method</b>	Purified from goat serum by ammonium sulphate precipitation followed by antigen affinity chromatography using the immunizing peptide.
<b>Shipping Instructions</b>	Refrigerated
<b>Predicted Species</b>	Human
<b>Reactive Species</b>	Human
<b>Human Gene ID</b>	23600
<b>Product Grade</b>	<a href="https://prod-vector-labs-pimcore-assets.s3.us-east-1.amazonaws.com/assets/products/image/elite_medium.png">https://prod-vector-labs-pimcore-assets.s3.us-east-1.amazonaws.com/assets/products/image/elite_medium.png</a>
<b>IHC Results</b>	Paraffin embedded Human Kidney. Recommended concentration: 5µg/ml.
<b>ELISA Detection Limit</b>	Antibody detection limit dilution 1:64000.
<b>Western Blot</b>	Approx 40-42kDa band observed in Human Kidney, Liver and Colorectal cancer lysates, and in lysates of cell line CaCo-2, and approx 40.45kDa band observed in lysates of cell line LNCaP (calculated MW of 42.4kDa according to NP_055139.4) and 43.9kDa according to .NP_001161067.1) Recommended concentration: 0.03-1µg/ml. Primary incubation 1 hour at room temperature.
<b>Application Type</b>	Pep-ELISA, WB, IHC

## DOCUMENTS

- [Data Sheet](#)

## GALLERY IMAGES

