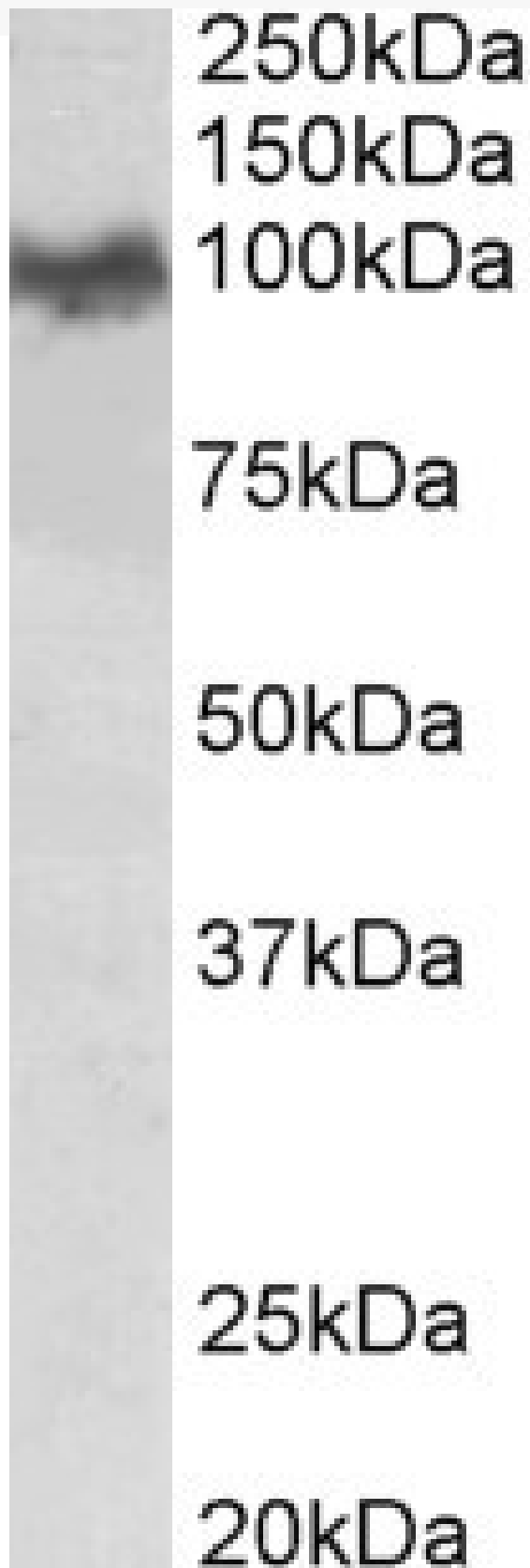


GOAT ANTI-AMYLOID BETA PEPTIDE (MOUSE) ANTIBODY

SKU: EB11159



SPECIFICATIONS

Formulation	Supplied at 0.5 mg/ml in Tris saline, 0.02% sodium azide, pH7.3 with 0.5% bovine serum albumin.
Unit Size	100 µg
Storage Instructions	Aliquot and store at -20°C. Minimize freezing and thawing.
Synonym / Alias Names	App protease nexin II E030013M08Rik Cvap betaApp appican amyloidogenic glycoprotein amyloid beta A4 protein amyloid beta (A4) precursor protein alzheimer disease amyloid A4 protein homolog Ag Adap Abpp Abeta
Accession ID	NP_001185752.1; NP_031497.2; NP_001185753.1; NP_001185754.1; NP_001185755.1
Blocking Peptide	EBP11159
Immunogen	Peptide with sequence DAEFGHDSGFVHRHQK-C, from the N Terminus of the protein sequence according to NP_001185752.1; NP_031497.2; NP_001185753.1; NP_001185754.1; NP_001185755.1.
Product Comments	This antibody is expected to recognize all reported isoforms of mAPP (NP_001185752.1; NP_031497.2; NP_001185753.1; NP_001185754.1; NP_001185755.1) and to recognize all lengths of the putative mouse Amyloid beta peptide.
Peptide Sequence	DAEFGHDSGFVHRHQK-C
Purification Method	Purified from goat serum by ammonium sulphate precipitation followed by antigen affinity chromatography using the immunizing peptide.
Shipping Instructions	Refrigerated
Predicted Species	Mouse, Rat
Reactive Species	Human, Mouse
Mouse Gene ID	11820
Rat Gene ID	54226
Product Grade	https://prod-vector-labs-pimcore-assets.s3.us-east-1.amazonaws.com/assets/products/image/elite_medium.png
IHC Results	Paraffin embedded Human Brain (Cerebellum). Recommended concentration: 5µg/ml.
ELISA Detection Limit	Antibody detection limit dilution 1:64000.
Western Blot	Approx 100kDa band observed in Mouse Brain lysates (calculated MW of 86.7kDa according to NP_001185752.1). Recommended concentration: 0.03-0.1µg/ml. Primary incubation was 1 hour.
Application Type	Pep-ELISA, WB, IHC

DOCUMENTS

- [Data Sheet](#)

GALLERY IMAGES

