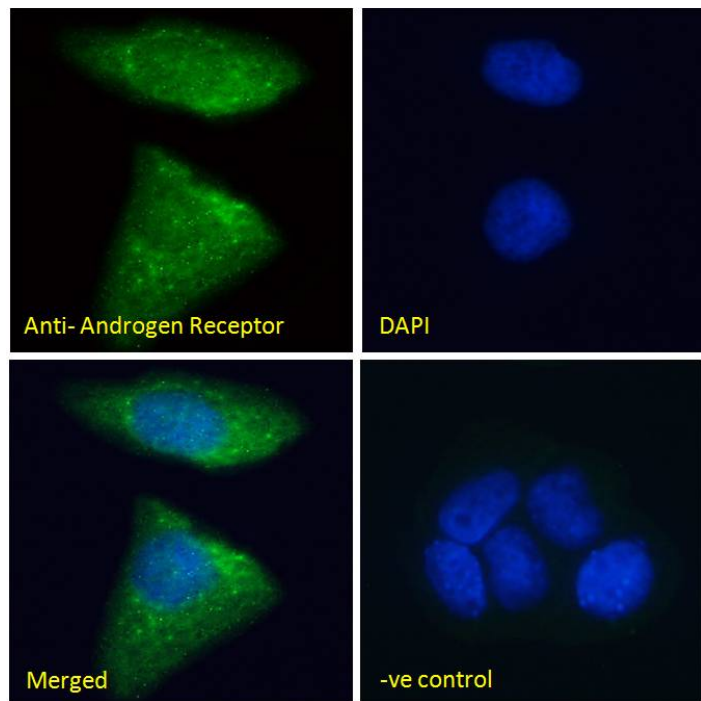


GOAT ANTI-ANDROGEN RECEPTOR ANTIBODY

SKU: EB06441



SPECIFICATIONS

Formulation Supplied at 0.5 mg/ml in Tris saline, 0.02% sodium azide, pH7.3 with 0.5% bovine serum albumin.

Unit Size 100 µg

Storage Instructions Aliquot and store at -20°C. Minimize freezing and thawing.

Synonym / RP11-383C12.1|dihydrotestosterone receptor|androgen

Alias receptor|HYSP1|HUMARA|SMAX1|NR3C4|SBMA|DHTR|TFM|AIS|KD|AR|dihydrotestosterone receptor|androgen

Names receptor

Usage Summary Immunofluorescence: Strong expression of the protein seen in the mitochondria/cytoplasm of MCF7 and U2OS cells. Recommended concentration: 10µg/ml. <p>Chromatin Immunoprecipitation: A six-fold increased presence of the FKBP5 locus observed when comparing the precipitations using EB06441 with non-specific goat IgG to bring down Androgen Receptor in a chromatin lysate from DHT-stimulated HEC50 cells.</p>

Accession ID NP_000035.2

Blocking Peptide EBP06441

Immunogen	Peptide with sequence EVQLGLGRVYPRPPSC, from the N Terminus of the protein sequence according to NP_000035.2.
Product Comments	This antibody is expected to recognize isoform 1 (NP_000035.2) only.
Peptide Sequence	EVQLGLGRVYPRPPSC
Purification Method	Purified from goat serum by ammonium sulphate precipitation followed by antigen affinity chromatography using the immunizing peptide.
Shipping Instructions	Refrigerated
Predicted Species	Human, Mouse, Rat, Dog, Pig, Cow
Reactive Species	Human, Mouse
Human Gene ID	367
Mouse Gene ID	11835
Rat Gene ID	24208
Product Grade	https://prod-vector-labs-pimcore-assets.s3.us-east-1.amazonaws.com/assets/products/image/elite_plus_medium.png
IHC Results	In paraffin embedded Human Prostate shows nuclear staining in the secretory cells of the gland. Recommended concentration: 2-3µg/ml. Cryosections of Mouse Hypothalamus and Amygdala. Recommended dilution range: 1:20,000.
ELISA Detection Limit	Antibody detection limit dilution 1:64000.
Western Blot	Approx 100kDa band observed in Human Cerebellum lysates (calculated MW of 99.2kDa according to NP_000035.2). Recommended concentration: 0.1-0.5µg/ml. Primary incubation 1 hour at room temperature. Negative Control: Human Pancreas lysate. Preliminary testing was unsuccessful on Mouse and Rat for this particular batch.
Application Type	Pep-ELISA, WB, IHC, IF, ChIP

DOCUMENTS

- [Data Sheet](#)

GALLERY IMAGES

