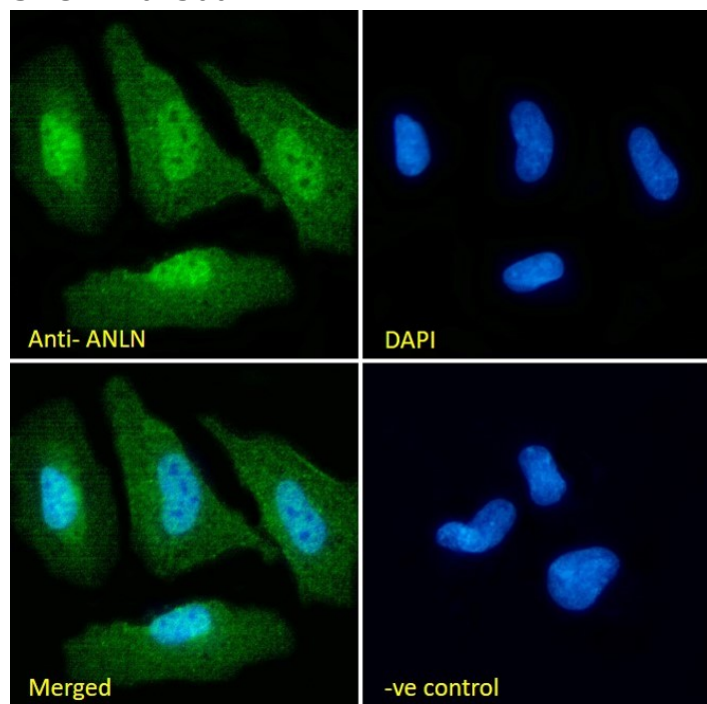


## GOAT ANTI-ANILLIN / SCRAPS (INTERNAL) ANTIBODY

SKU: EB07300



## SPECIFICATIONS

**Formulation** Supplied at 0.5 mg/ml in Tris saline, 0.02% sodium azide, pH7.3 with 0.5% bovine serum albumin.

**Unit Size** 100 µg

**Storage Instructions** Aliquot and store at -20°C. Minimize freezing and thawing.

**Synonym / Alias Names** anillin (Drosophila Scraps homolog), actin binding protein|DKFZp779A055|anillin, actin binding protein (scraps homolog, Drosophila)|ANLN|Scraps|ANILLIN

**Usage Summary** <strong>Immunofluorescence:</strong> Strong expression of the protein seen in the nuclei of NIH3T3 and Neuro-2a cells. Recommended concentration: 10µg/ml.

**Accession ID** NP\_061155.2

**Blocking Peptide** EBP07300

**Immunogen** Peptide with sequence C-TYPDDEKRKNP, from the internal region of the protein sequence according to NP\_061155.2.

<b>Peptide Sequence</b>	C-TYPDDEKRKNP
<b>Purification Method</b>	Purified from goat serum by ammonium sulphate precipitation followed by antigen affinity chromatography using the immunizing peptide.
<b>Shipping Instructions</b>	Refrigerated
<b>Predicted Species</b>	Human, Mouse, Rat, Dog
<b>Reactive Species</b>	Mouse
<b>Human Gene ID</b>	54443
<b>Mouse Gene ID</b>	68743
<b>Rat Gene ID</b>	307056
<b>Product Grade</b>	<a href="https://prod-vector-labs-pimcore-assets.s3.us-east-1.amazonaws.com/assets/products/image/elite_medium.png">https://prod-vector-labs-pimcore-assets.s3.us-east-1.amazonaws.com/assets/products/image/elite_medium.png</a>
<b>ELISA Detection Limit</b>	Antibody detection limit dilution 1:16000.
<b>Application Type</b>	Pep-ELISA, IF

## DOCUMENTS

- [Data Sheet](#)

## GALLERY IMAGES

