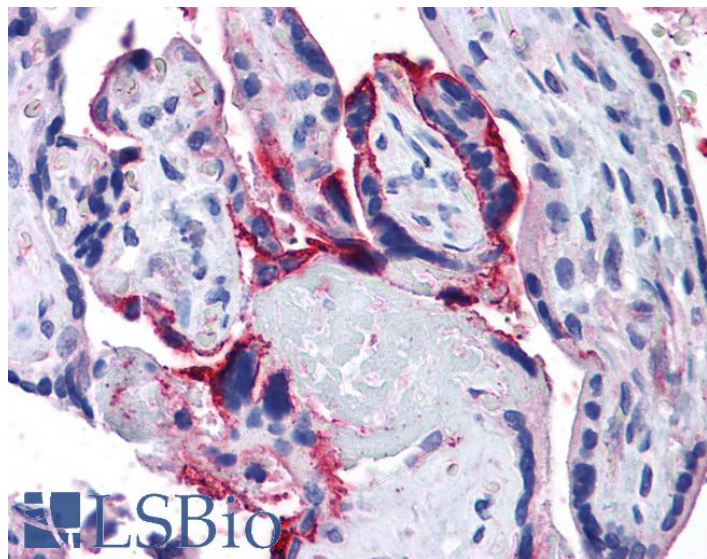


GOAT ANTI-APH1A ANTIBODY

SKU: EB07860



SPECIFICATIONS

Formulation	Supplied at 0.5 mg/ml in Tris saline, 0.02% sodium azide, pH7.3 with 0.5% bovine serum albumin.
Unit Size	100 µg
Storage Instructions	Aliquot and store at -20°C. Minimize freezing and thawing.
Synonym / Alias Names	anterior pharynx defective 1 homolog A CGI-78 APH-1A 6530402N02Rik anterior pharynx defective 1 homolog A (C. elegans) APH1A
Accession ID	NP_001071096.1; NP_057106.2
Blocking Peptide	EBP07860
Immunogen	Peptide with sequence C-HVTDRSDARLQYG, from the internal region of the protein sequence according to NP_001071096.1; NP_057106.2.
Product Comments	This antibody is expected to recognize isoform 1 (NP_001071096.1) and isoform 2 (NP_057106.2).
Peptide Sequence	C-HVTDRSDARLQYG
Purification Method	Purified from goat serum by ammonium sulphate precipitation followed by antigen affinity chromatography using the immunizing peptide.

Shipping Instructions	Refrigerated
Predicted Species	Human, Mouse, Rat, Dog, Pig, Cow
Reactive Species	Human
Human Gene ID	51107
Product Grade	https://prod-vector-labs-pimcore-assets.s3.us-east-1.amazonaws.com/assets/products/image/elite_medium.png
IHC Results	Paraffin embedded Human Placenta and Kidney. Recommended concentration: 5µg/ml.
ELISA	
Detection Limit	Antibody detection limit dilution 1:128000.
Western Blot	Approx 26kDa band observed in Human Brain (Cerebral Cortex) lysates (calculated MW of 26.8kDa according to NP_057106.2). Recommended concentration: 0.05-0.1µg/ml. Primary incubation was 1 hour.
Application Type	Pep-ELISA, WB, IHC

DOCUMENTS

- [Data Sheet](#)

GALLERY IMAGES

