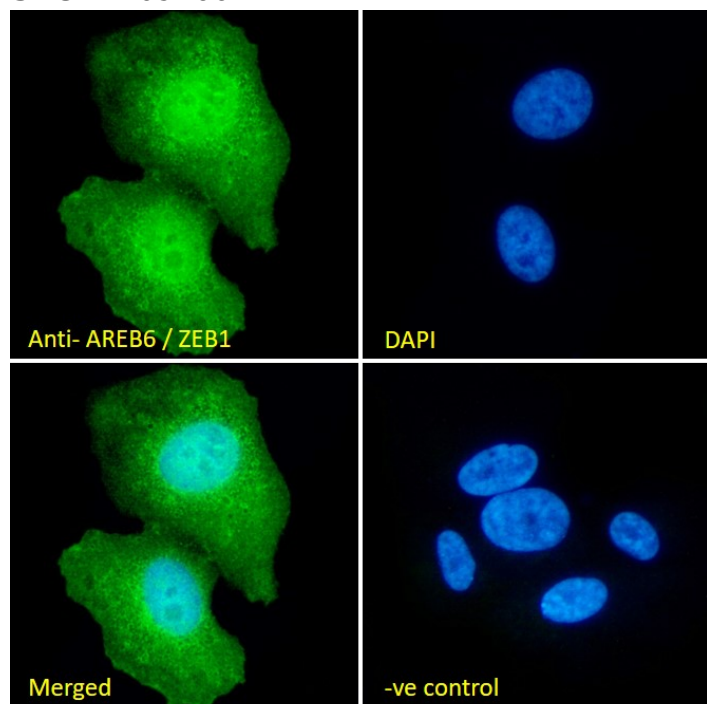


## GOAT ANTI-AREB6 / ZEB1 ANTIBODY

SKU: EB09166



## SPECIFICATIONS

<b>Formulation</b>	Supplied at 0.5 mg/ml in Tris saline, 0.02% sodium azide, pH7.3 with 0.5% bovine serum albumin.
<b>Unit Size</b>	100 µg
<b>Storage Instructions</b>	Aliquot and store at -20°C. Minimize freezing and thawing.
<b>Synonym / Alias</b>	zinc finger homeodomain enhancer-binding protein transcription factor 8 (represses interleukin 2 expression) OTTHUMP00000019405 ZFX1A ZFHEP ZEB TCF8 N1L2A N1L-2A N1L-2-A MGC133261 DELTA-EF1 BZP zinc
<b>Names</b>	finger E-box binding homeobox 1 AREB6 ZEB1
<b>Usage Summary</b>	<strong>Immunofluorescence:</strong> Strong expression of the protein seen in the nuclei and cytoplasm of U2OS cells. Recommended concentration: 10µg/ml.
<b>Accession ID</b>	NP_001121600.1; NP_110378.3
<b>Blocking Peptide</b>	EBP09166
<b>Immunogen</b>	Peptide with sequence C-RPQIRQKIENKPLQE, from the internal region of the protein sequence according to NP_001121600.1; NP_110378.3.

<b>Product Comments</b>	This antibody is expected to recognize both reported isoforms (NP_001121600.1; NP_110378.3).
<b>Peptide Sequence</b>	C-RPQIRQKIENKPLQE
<b>Purification Method</b>	Purified from goat serum by ammonium sulphate precipitation followed by antigen affinity chromatography using the immunizing peptide.
<b>Shipping Instructions</b>	Refrigerated
<b>Predicted Species</b>	Human, Mouse, Rat
<b>Reactive Species</b>	Human, Mouse
<b>Human Gene ID</b>	6935
<b>Mouse Gene ID</b>	21417
<b>Rat Gene ID</b>	25705
<b>Product Grade</b>	<a href="https://prod-vector-labs-pimcore-assets.s3.us-east-1.amazonaws.com/assets/products/image/elite_medium.png">https://prod-vector-labs-pimcore-assets.s3.us-east-1.amazonaws.com/assets/products/image/elite_medium.png</a>
<b>ELISA Detection Limit</b>	Antibody detection limit dilution 1:32000.
<b>Western Blot</b>	Approx.100kDa band observed in Mouse Heart lysates (calculated MW of 122kDa according to Human NP_110378.3 and Mouse NP_035676.1). Recommended concentration: 0.05-0.2µg/ml. Primary incubation was 1 hour. Preliminary testing was unsuccessful on Human and Rat Heart for this particular batch.
<b>Application Type</b>	Pep-ELISA, WB, IF

## DOCUMENTS

- [Data Sheet](#)

## GALLERY IMAGES

