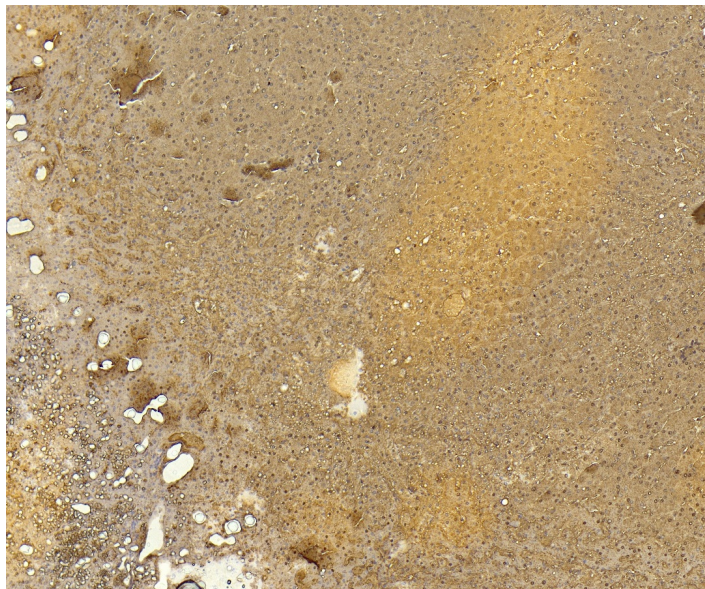


GOAT ANTI-ARGINASE I ANTIBODY

SKU: EB06795



SPECIFICATIONS

Formulation	Supplied at 0.5 mg/ml in Tris saline, 0.02% sodium azide, pH7.3 with 0.5% bovine serum albumin.
Unit Size	100 µg
Storage Instructions	Aliquot and store at -20°C. Minimize freezing and thawing.
Synonym / Alias Names	type I arginase liver-type arginase arginase 1 arginase, type I A-I HGNC:663 arginase, liver ARG1
Usage Summary	Immunofluorescence: Strong expression of the protein seen in the cytoplasm of K562 cells.
Accession ID	Recommended concentration: 10µg/ml.
Blocking Peptide	NP_000036.2; NP_001231367.1; NP_001355949.1
Immunogen	EBP06795
Product Comments	Peptide with sequence CFGLAREGNHKPID, from the C Terminus of the protein sequence according to NP_000036.2; NP_001231367.1; NP_001355949.1.
Peptide Sequence	Please note that ARG1 is not expressed in Human M2 macrophages, but it is in other species (eg rodents).

Purification Method	Purified from goat serum by ammonium sulphate precipitation followed by antigen affinity chromatography using the immunizing peptide.
Shipping Instructions	Refrigerated
Predicted Species	Human, Dog, Cow, Pig
Reactive Species	Human
Human Gene ID	383
Mouse Gene ID	11846
Rat Gene ID	29221
Product Grade	https://prod-vector-labs-pimcore-assets.s3.us-east-1.amazonaws.com/assets/products/image/elite_plus_medium.png
IHC Results	Paraffin embedded Human Liver and Spleen. Recommended concentration: 4-5µg/ml.
ELISA	
Detection Limit	Antibody detection limit dilution 1:4000.
Western Blot	Approx.37kDa band observed in Human Liver lysates (calculated MW of 34.7kDa according to NP_000036.2) . Recommended concentration: 0.3-1µg/ml. Primary incubation 1 hour at room temperature.
Application Type	Pep-ELISA, WB, IF, IHC

DOCUMENTS

- [Data Sheet](#)

GALLERY IMAGES

