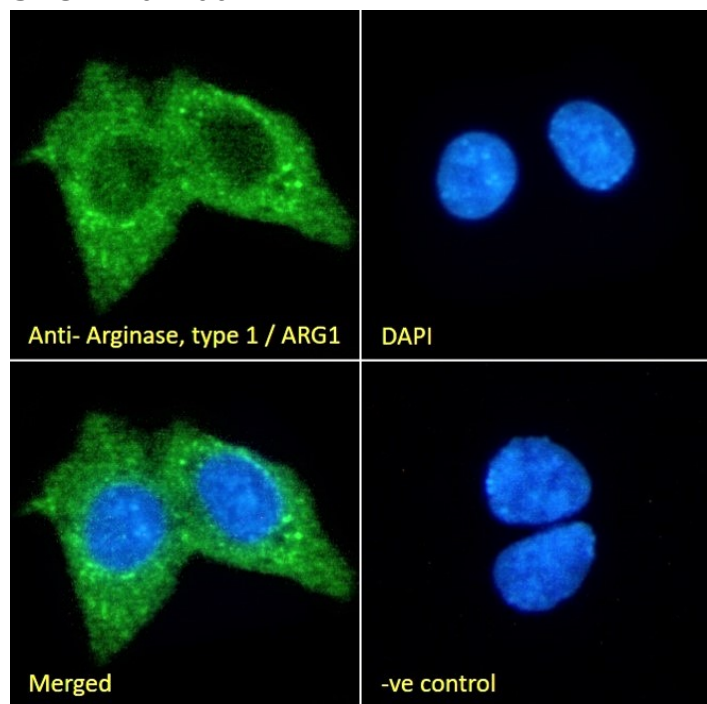


GOAT ANTI-ARGINASE, TYPE 1 / ARG1 ANTIBODY

SKU: EB07706



SPECIFICATIONS

Formulation	Supplied at 0.5 mg/ml in Tris saline, 0.02% sodium azide, pH7.3 with 0.5% bovine serum albumin.
Unit Size	100 µg
Storage Instructions	Aliquot and store at -20°C. Minimize freezing and thawing.
Synonym / Alias Names	A-I arginase, liver arginase, type I ARG1
Usage Summary	Immunofluorescence: Strong expression of the protein seen in the cytoplasm of HepG2 cells.
Accession ID	Recommended concentration: 10µg/ml.
Blocking Peptide	NP_000036.2; NP_001231367.1; NP_001355949.1
Immunogen	EBP07706
	Peptide with sequence C-REGNHKPIDYLNPPK, from the C Terminus of the protein sequence according to NP_000036.2; NP_001231367.1; NP_001355949.1.

Product Comments	Please note that ARG1 is not expressed in Human M2 macrophages, but it is in other species (eg rodents).
Peptide Sequence	C-REGNHKPIDYLNPPK
Purification Method	Purified from goat serum by ammonium sulphate precipitation followed by antigen affinity chromatography using the immunizing peptide.
Shipping Instructions	Refrigerated
Predicted Species	Human, Dog
Reactive Species	Human
Human Gene ID	383
Product Grade	https://prod-vector-labs-pimcore-assets.s3.us-east-1.amazonaws.com/assets/products/image/elite_plus_medium.png
IHC Results	Paraffin embedded Human Liver. Recommended concentration: 5-6µg/ml.
ELISA	
Detection Limit	Antibody detection limit dilution 1:2000.
Western Blot	Approx 37kDa band observed in Human Liver lysates (calculated MW of 34.7kDa according to NP_000036.2. Recommended concentration: 0.01-0.03µg/ml. Primary incubation 1 hour at room temperature.
Application Type	Pep-ELISA, WB, IHC, IF

DOCUMENTS

- [Data Sheet](#)

GALLERY IMAGES

