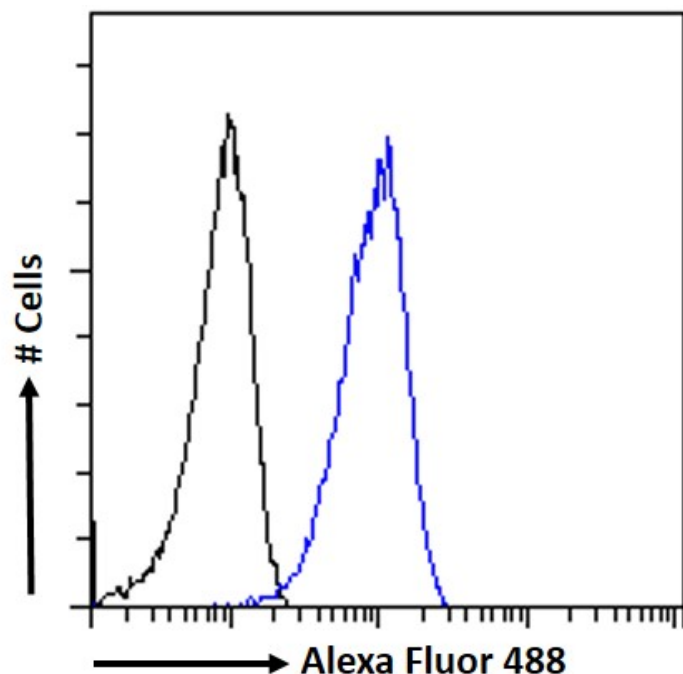


GOAT ANTI-ARHGDIB ANTIBODY

SKU: EB10223



SPECIFICATIONS

Formulation	Supplied at 0.5 mg/ml in Tris saline, 0.02% sodium azide, pH7.3 with 0.5% bovine serum albumin.
Unit Size	100 µg
Storage Instructions	Aliquot and store at -20°C. Minimize freezing and thawing.
Synonym / Alias Names	ARHGDIB RhoGDI2 Rho GDP-dissociation inhibitor 2 Rho GDP dissociation inhibitor (GDI) beta Rho GDI 2 RAP1GN1 Ly-GDI LYGDI GDID4 GDIA2 D4
Usage Summary	<p>Immunofluorescence: Strong expression of the protein seen in the cytoplasm of A431 cells.</p> <p>Recommended concentration: 10µg/ml.</p> <p>Flow Cytometry: Flow cytometric analysis of A431 cells. Recommended concentration: 10ug/ml.</p>
Accession ID	NP_001166.3
Blocking Peptide	EBP10223
Immunogen	Peptide with sequence TEKAPEPHVE-C, from the N Terminus of the protein sequence according to NP_001166.3.

Peptide Sequence	TEKAPEPHVE-C
Purification Method	Purified from goat serum by ammonium sulphate precipitation followed by antigen affinity chromatography using the immunizing peptide.
Shipping Instructions	Refrigerated
Predicted Species	Human, Cow
Reactive Species	Human
Human Gene ID	397
Product Grade	https://prod-vector-labs-pimcore-assets.s3.us-east-1.amazonaws.com/assets/products/image/elite_plus_medium.png
ELISA Detection Limit	Antibody detection limit dilution 1:4000.
Western Blot	Approx. 25kDa band observed in lysates of cell lines Daudi, Jurkat, K562, U937, peripheral blood Monocytes (PBM) and in Human Thymus and Cerebellum lysates, and approx. 26kDa in lysates of cell line MOLT4 (calculated MW of 23.0kDa according to NP_001166.3). Recommended concentration: 0.01-3µg/ml. Primary incubation 1 hour at room temperature.
Application Type	Pep-ELISA, WB, IF, FC

DOCUMENTS

- [Data Sheet](#)

GALLERY IMAGES

