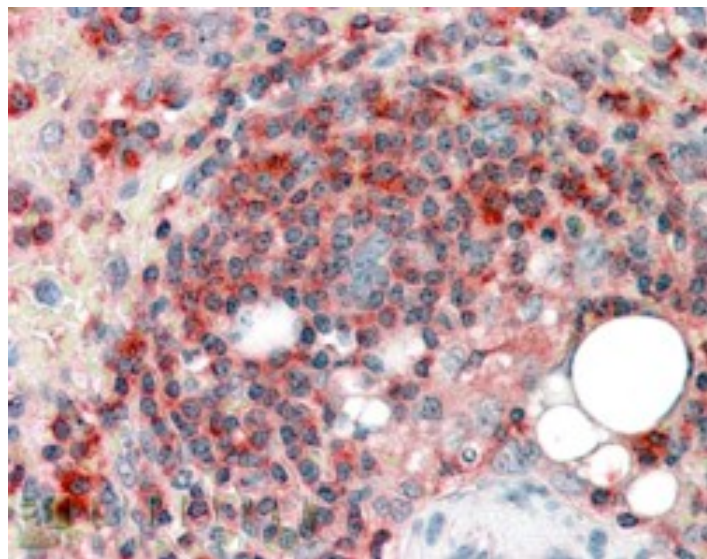


GOAT ANTI-ARPC2 ANTIBODY

SKU: EB05433



SPECIFICATIONS

Formulation	Supplied at 0.5 mg/ml in Tris saline, 0.02% sodium azide, pH7.3 with 0.5% bovine serum albumin.
Unit Size	100 µg
Storage Instructions	Aliquot and store at -20°C. Minimize freezing and thawing.
Synonym / Alias Names	actin related protein 2/3 complex subunit 2 ARP2/3 protein complex subunit 34 PNAS-139 p34-Arc PRO2446 ARC34 actin related protein 2/3 complex, subunit 2, 34kDa ARPC2
Usage Summary	Immunofluorescence: Strong expression of the protein seen in the cytoplasm of A431 and HeLa cells. Recommended concentration: 10µg/ml.
Accession ID	NP_005722.1; NP_690601.1
Blocking Peptide	EBP05433
Immunogen	Peptide with sequence C-EMKTITGKTFSSR, from the C Terminus of the protein sequence according to NP_005722.1; NP_690601.1.
Product Comments	The reported variants NP_005722.1 and NP_690601.1 represent identical protein.
Peptide Sequence	C-EMKTITGKTFSSR

Purification Method	Purified from goat serum by ammonium sulphate precipitation followed by antigen affinity chromatography using the immunizing peptide.
Shipping Instructions	Refrigerated
Predicted Species	Human, Mouse, Rat, Dog, Cow
Reactive Species	Human
Human Gene ID	10109
Mouse Gene ID	76709
Product Grade	https://prod-vector-labs-pimcore-assets.s3.us-east-1.amazonaws.com/assets/products/image/elite_plus_medium.png
IHC Results	In paraffin embedded Human Spleen shows cytoplasm staining in some splenocytes in and around a T-cell area. Recommended concentration, 3-5µg/ml.
ELISA Detection Limit	Antibody detection limit dilution 1:32000.
Western Blot	Approx 34-35kDa band observed in lysates of cell lines CACO-2, HeLa and Jurkat (calculated MW of 34.3kDa according to NP_005722.1). Recommended concentration: 0.1-0.5µg/ml. Primary incubation 1 hour at room temperature.
Application Type	Pep-ELISA, IF, IHC, WB

DOCUMENTS

- [Data Sheet](#)

GALLERY IMAGES

