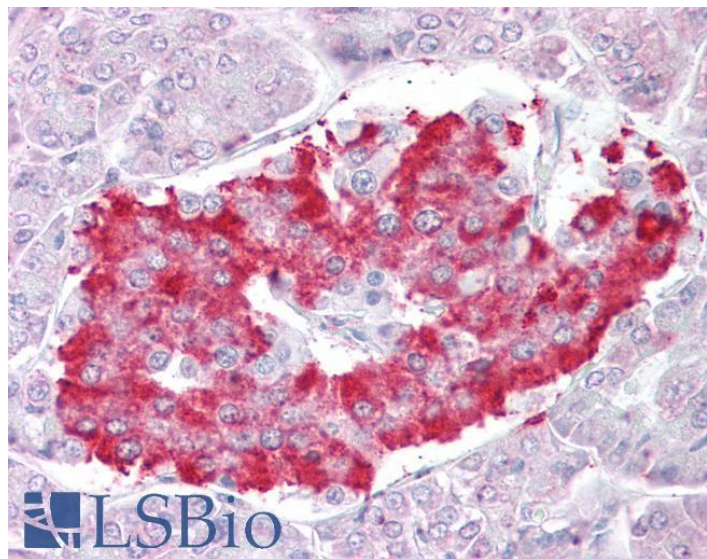


GOAT ANTI-ATG4D ANTIBODY

SKU: EB09223



SPECIFICATIONS

Formulation	Supplied at 0.5 mg/ml in Tris saline, 0.02% sodium azide, pH7.3 with 0.5% bovine serum albumin.
Unit Size	100 µg
Storage Instructions	Aliquot and store at -20°C. Minimize freezing and thawing.
Synonym / Alias Names	cysteine protease involved in autophagy autophagy-related cysteine endopeptidase 4 autophagin-4 AUT-like 4, cysteine endopeptidase APG4 autophagy 4 homolog D AUTL4 APG4D APG4-D ATG4 autophagy related 4 homolog D (S. cerevisiae) ATG4D
Usage Summary	Immunofluorescence: Strong expression of the protein seen in the cytoplasm of HEK293 cells. Recommended concentration: 10µg/ml. Flow Cytometry: Flow cytometric analysis of HEK293 cells. Recommended concentration: 10ug/ml.
Accession ID	NP_116274.3; NP_001268433.1
Blocking Peptide	EBP09223
Immunogen	Peptide with sequence CSQLAQPTLRLPRT, from the internal region (near C terminus) of the protein sequence according to NP_116274.3; NP_001268433.1.
Peptide Sequence	CSQLAQPTLRLPRT
Purification Method	Purified from goat serum by ammonium sulphate precipitation followed by antigen affinity chromatography using the immunizing peptide.

Shipping Instructions	Refrigerated
Predicted Species	Human, Mouse, Rat, Dog, Pig
Reactive Species	Human
Human Gene ID	84971
Mouse Gene ID	235040
Rat Gene ID	686505
Product Grade	https://prod-vector-labs-pimcore-assets.s3.us-east-1.amazonaws.com/assets/products/image/elite_plus_medium.png
IHC Results	Paraffin embedded Human Pancreas. Recommended concentration: 2.5µg/ml.
ELISA	
Detection Limit	Antibody detection limit dilution 1:32000.
Application Type	Pep-ELISA, IF, IHC, FC

DOCUMENTS

- [Data Sheet](#)

GALLERY IMAGES

