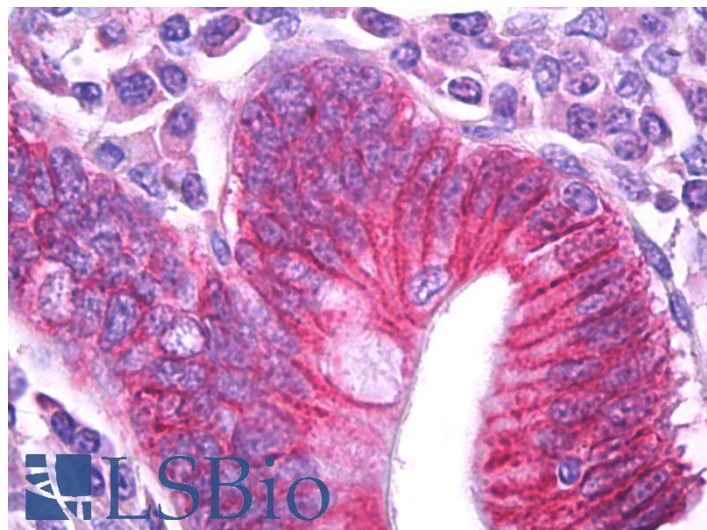


# GOAT ANTI-ATP1B1 ANTIBODY

**SKU:** EB09640



## SPECIFICATIONS

**Formulation** Supplied at 0.5 mg/ml in Tris saline, 0.02% sodium azide, pH7.3 with 0.5% bovine serum albumin.

**Unit Size** 100 µg

**Storage Instructions** Aliquot and store at -20°C. Minimize freezing and thawing.

**Synonym / Alias Names** sodium/potassium-transporting ATPase beta-1 chain|sodium/potassium-dependent ATPase beta-1 subunit|adenosinetriphosphatase|OTTHUMP00000032538|OTTHUMP00000032537|Na, K-ATPase beta 1 subunit|Na, K-ATPase beta-1 polypeptide|Na+/K+ -ATPase beta 1 subunit|Beta 1-subunit of Na(+), K(+)-ATPase|MGC1798|ATP1B|ATPase, Na+/K+ transporting, beta 1 polypeptide|ATP1B1

**Accession ID** NP\_001668.1; NP\_001001787.1

**Blocking Peptide** EBP09640

**Immunogen** Peptide with sequence C-KTEISFRPNPKSYE, from the internal region of the protein sequence according to NP\_001668.1; NP\_001001787.1.

**Product Comments** This antibody is expected to recognize both reported isoforms (NP\_001668.1; NP\_001001787.1).

**Peptide Sequence** C-KTEISFRPNPKSYE

**Purification Method** Purified from goat serum by ammonium sulphate precipitation followed by antigen affinity chromatography using the immunizing peptide.

<b>Shipping Instructions</b>	Refrigerated
<b>Predicted Species</b>	Human, Mouse, Rat, Dog, Cow, Pig
<b>Reactive Species</b>	Human, Mouse, Rat
<b>Human Gene ID</b>	481
<b>Product Grade</b>	<a href="https://prod-vector-labs-pimcore-assets.s3.us-east-1.amazonaws.com/assets/products/image/elite_medium.png">https://prod-vector-labs-pimcore-assets.s3.us-east-1.amazonaws.com/assets/products/image/elite_medium.png</a>
<b>IHC Results</b>	Paraffin embedded Human Small Intestine. Recommended concentration: 5µg/ml.
<b>ELISA</b>	
<b>Detection Limit</b>	Antibody detection limit dilution 1:128000.
<b>Western Blot</b>	Approx 48kDa band observed in Rat Retina lysates and 50kDa in Mouse and Rat Kidney lysates (calculated MW of 35.1kDa according to Human NP_001668.1, 35.2kDa according to Mouse NP_033851.1 and Rat NP_037245.2). The observed molecular weight corresponds to the glycosylated form (PMID: 20130120). Recommended concentration: 0.1-0.3µg/ml.
<b>Application Type</b>	Pep-ELISA, WB, IHC

## DOCUMENTS

- [Safety Data Sheet](#)

## GALLERY IMAGES

