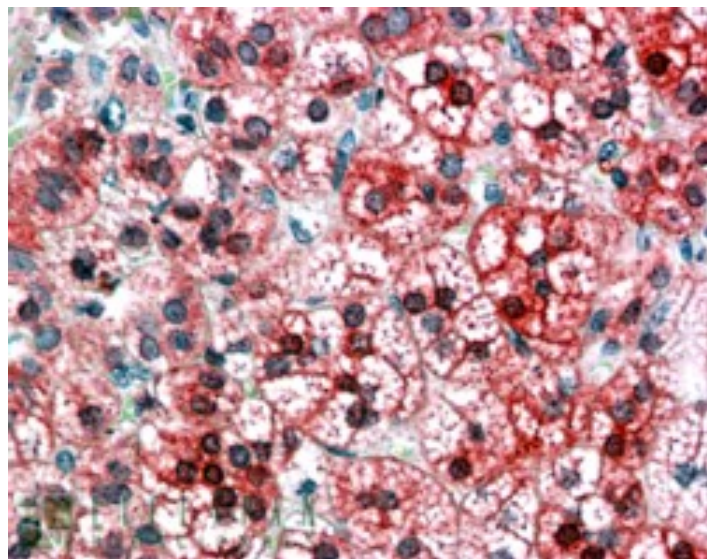


# GOAT ANTI-AXIN1 ANTIBODY

**SKU:** EB05380



## SPECIFICATIONS

<b>Formulation</b>	Supplied at 0.5 mg/ml in Tris saline, 0.02% sodium azide, pH7.3 with 0.5% bovine serum albumin.
<b>Unit Size</b>	100 µg
<b>Storage Instructions</b>	Aliquot and store at -20°C. Minimize freezing and thawing.
<b>Synonym / Alias Names</b>	AXIN1 axin 1 AXIN LA16c-314G4.3 MGC52315 axis inhibition protein 1 axis inhibitor 1 fused, mouse, homolog of
<b>Accession ID</b>	NP_003493.1; NP_851393.1
<b>Blocking Peptide</b>	EBP05380
<b>Immunogen</b>	Peptide with sequence C-FEEKIIGKVEKVD, from the C Terminus of the protein sequence according to NP_003493.1; NP_851393.1.
<b>Product Comments</b>	This antibody is expected to recognise both reported isoforms.
<b>Peptide Sequence</b>	C-FEEKIIGKVEKVD
<b>Purification Method</b>	Purified from goat serum by ammonium sulphate precipitation followed by antigen affinity chromatography using the immunizing peptide.

<b>Shipping Instructions</b>	Refrigerated
<b>Predicted Species</b>	Human, Mouse, Rat, Dog, Cow
<b>Reactive Species</b>	Human
<b>Human Gene ID</b>	8312
<b>Mouse Gene ID</b>	12005
<b>Rat Gene ID</b>	79257
<b>Product Grade</b>	<a href="https://prod-vector-labs-pimcore-assets.s3.us-east-1.amazonaws.com/assets/products/image/elite_medium.png">https://prod-vector-labs-pimcore-assets.s3.us-east-1.amazonaws.com/assets/products/image/elite_medium.png</a>
<b>IHC Results</b>	In paraffin embedded Human Adrenal Gland shows membranous and fibrous staining in and around secretory cells of the zona fasciculata in the cortex. Recommended concentration, 3-5µg/ml.
<b>ELISA</b>	
<b>Detection Limit</b>	Antibody detection limit dilution 1:128000.
<b>Western Blot</b>	Preliminary experiments gave bands at approx 150kDa and 22-24kDa in Human Brain (Hippocampus) lysates after 0.1µg/ml antibody staining. Please note that currently we cannot find an explanation in the literature for the bands we observe given the calculated size of 95.6kDa according to NP_003493.1 and 91.7kDa according to NP_851393.1. The detected bands were successfully blocked by incubation with the immunizing peptide (and BLAST results with the immunizing peptide sequence did not identify any other proteins to explain the additional bands).
<b>Application Type</b>	Pep-ELISA, IHC

## DOCUMENTS

- [Data Sheet](#)

## GALLERY IMAGES

