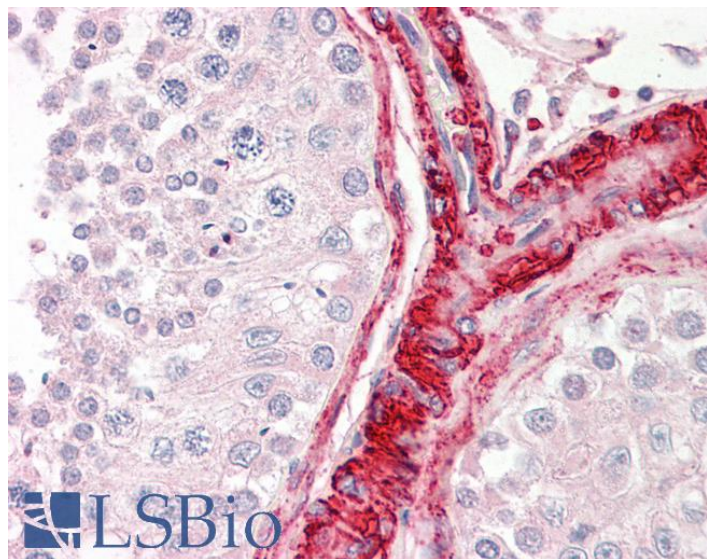


GOAT ANTI-BAG5 (N TERMINUS) ANTIBODY

SKU: EB05487



SPECIFICATIONS

Formulation Supplied at 0.5 mg/ml in Tris saline, 0.02% sodium azide, pH7.3 with 0.5% bovine serum albumin.

Unit Size 100 µg

Storage Instructions Aliquot and store at -20°C. Minimize freezing and thawing.

Synonym /

Alias Names BAG5|BCL2-associated athanogene 5|BAG-5|KIAA0873|BAG-family molecular chaperone regulator-5

Accession ID NP_001015049.1; NP_004864.1; NP_001015048.1

Blocking Peptide EBP05487

Immunogen Peptide with sequence DMGNQHPSISRLQ-C, from the N Terminus of the protein sequence according to NP_001015049.1; NP_004864.1; NP_001015048.1.

Product Comments Variants (NP_004864.1; NP_001015048.1) encode the same isoform.

Peptide Sequence DMGNQHPSISRLQ-C

Purification Method Purified from goat serum by ammonium sulphate precipitation followed by antigen affinity chromatography using the immunizing peptide.

Shipping Instructions	Refrigerated
Predicted Species	Human, Mouse, Rat, Dog, Cow
Reactive Species	Human
Human Gene ID	9529
Product Grade	https://prod-vector-labs-pimcore-assets.s3.us-east-1.amazonaws.com/assets/products/image/elite_medium.png
IHC Results	Paraffin embedded Human Testis. Recommended concentration: 3.75µg/ml.
ELISA	
Detection Limit	Antibody detection limit dilution 1:64000.
Western Blot	Approx 55+48kDa bands observed in nuclear lysates of cell line HeLa (calculated MW of 56.0kDa according to NP_001015049.1 and of 51.2kDa according to NP_004864.1; NP_001015048.1). Recommended concentration: 1-3µg/ml.
Application Type	Pep-ELISA, WB, IHC

DOCUMENTS

- [Data Sheet](#)

GALLERY IMAGES

