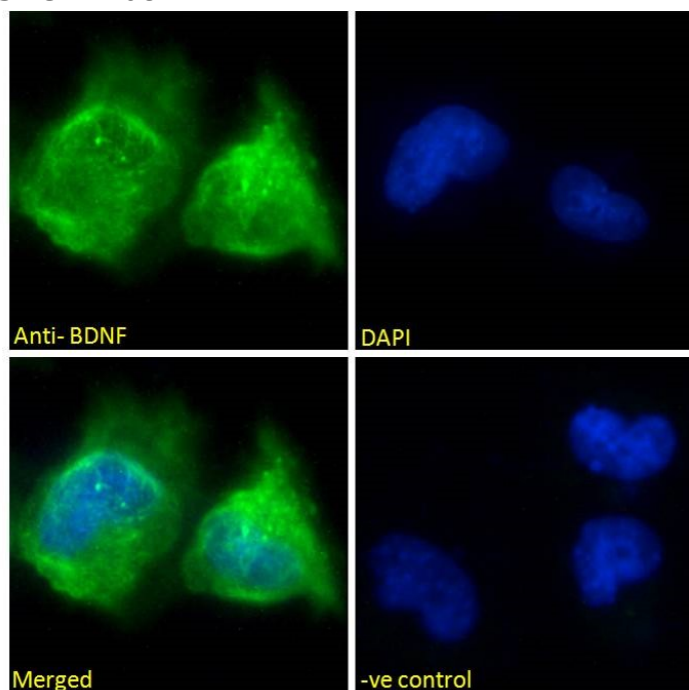


GOAT ANTI-BDNF ANTIBODY

SKU: EB08117



SPECIFICATIONS

Formulation Supplied at 0.5 mg/ml in Tris saline, 0.02% sodium azide, pH7.3 with 0.5% bovine serum albumin.

Unit Size 100 µg

Storage Instructions Aliquot and store at -20°C. Minimize freezing and thawing.

Synonym /

Alias neurotrophin|MGC34632|brain-derived neurotrophic factor|BDNF

Names

Usage Summary **Immunofluorescence:** Expression of the protein seen in the nucleus and cytoplasm of Glioblastoma U251 cells. Recommended concentration: 10µg/ml.

Accession ID NP_001700.2; NP_001700.2; NP_733928.1; NP_733929.1; NP_733930.1; NP_733931.1

Blocking Peptide EBP08117

Immunogen Peptide with sequence ETKCNPMGYTKE, from the internal region of the protein sequence according to NP_001700.2; NP_001700.2; NP_733928.1; NP_733929.1; NP_733930.1; NP_733931.1.

Product	This antibody is expected to recognise all reported isoforms (NP_001700.2; NP_001700.2; NP_733928.1;
Comments	NP_733929.1; NP_733930.1; NP_733931.1)
Peptide Sequence	ETKCNPMGYTKE
Purification Method	Purified from goat serum by ammonium sulphate precipitation followed by antigen affinity chromatography using the immunizing peptide.
Shipping Instructions	Refrigerated
Predicted Species	Human, Mouse, Rat, Dog
Reactive Species	Human
Human Gene ID	627
Product Grade	https://prod-vector-labs-pimcore-assets.s3.us-east-1.amazonaws.com/assets/products/image/elite_medium.png
ELISA Detection Limit	Antibody detection limit dilution 1:2000.
Application Type	Pep-ELISA, IF

DOCUMENTS

- [Data Sheet](#)

GALLERY IMAGES

