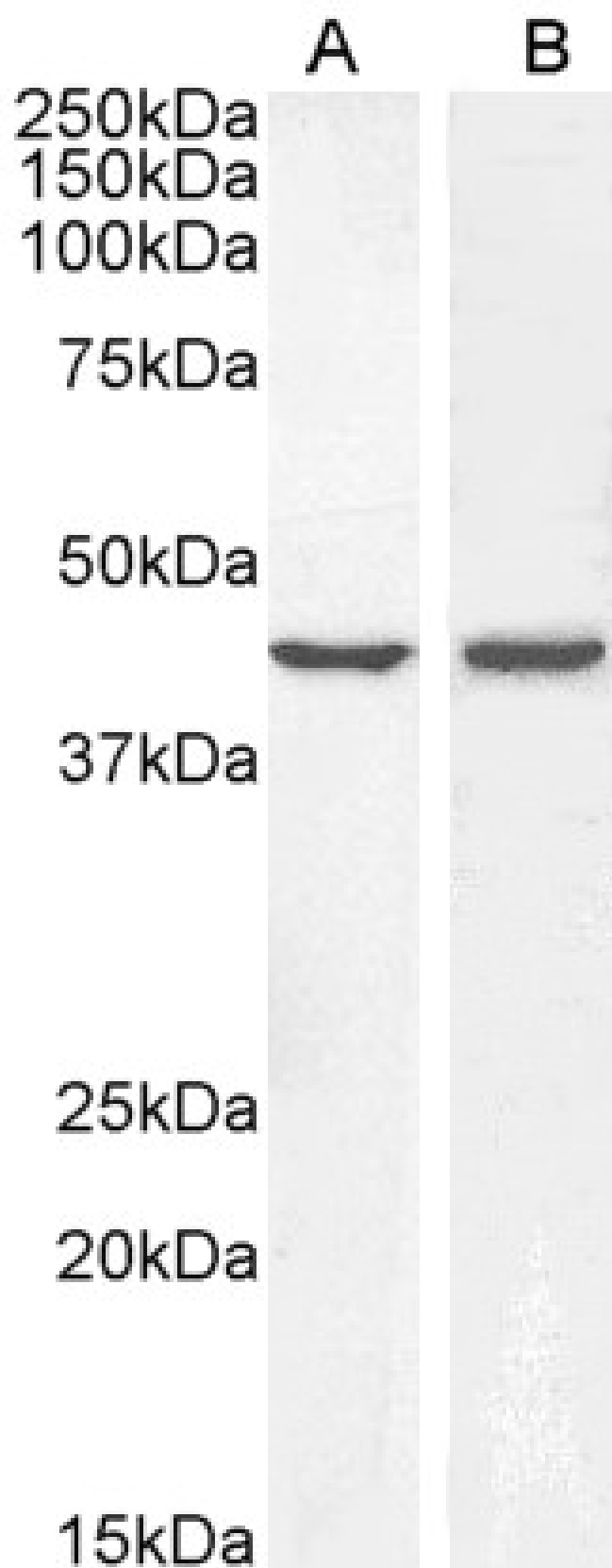


GOAT ANTI-BMP4 ANTIBODY

SKU: EB12544



SPECIFICATIONS

Formulation Supplied at 0.5 mg/ml in Tris saline, 0.02% sodium azide, pH7.3 with 0.5% bovine serum albumin.

Unit Size 100 µg

Storage Instructions Aliquot and store at -20°C. Minimize freezing and thawing.

Synonym / Alias Names bone morphogenetic protein 2B|BMP-4|BMP-2B|ZYME|OFC11|MCOPS6|BMP2B1|BMP2B|bone morphogenetic protein 4|BMP4

Accession ID NP_001193.2

Blocking Peptide EBP12544

Immunogen Peptide with sequence C-SPKHHSQRARK, from the internal region of the protein sequence according to NP_001193.2.

Product Comments The immunizing peptide represents the N terminus of the mature protein. Reported variants represent identical protein: NP_570911.2, NP_001193.2, NP_570912.2.

Peptide Sequence C-SPKHHSQRARK

Purification Method Purified from goat serum by ammonium sulphate precipitation followed by antigen affinity chromatography using the immunizing peptide.

Shipping Instructions Refrigerated

Predicted Species Human

Reactive Species Human

Human Gene ID 652

Product Grade https://prod-vector-labs-pimcore-assets.s3.us-east-1.amazonaws.com/assets/products/image/elite_medium.png

ELISA Detection Limit Antibody detection limit dilution 1:64000.

Western Blot Approx 40-45kDa band observed in lysates of cell lines A431 and HeLa (calculated MW of 46.6kDa according to NP_001193.2). Recommended concentration: 0.3-1µg/ml.

Application Type Pep-ELISA, WB

DOCUMENTS

- [Data Sheet](#)

GALLERY IMAGES

