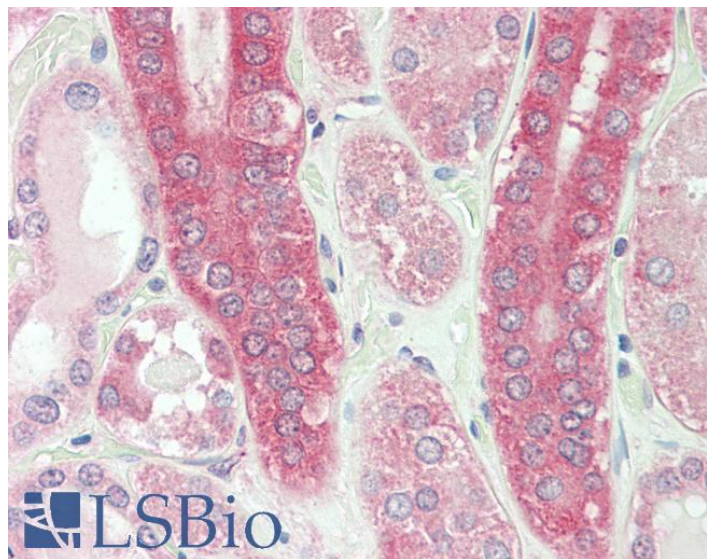


# GOAT ANTI-CAPN1 (AA468-481) ANTIBODY

**SKU:** EB11989



## SPECIFICATIONS

**Formulation** Supplied at 0.5 mg/ml in Tris saline, 0.02% sodium azide, pH7.3 with 0.5% bovine serum albumin.

**Unit Size** 100 µg

**Storage Instructions** Aliquot and store at -20°C. Minimize freezing and thawing.

**Synonym / Alias Names** micromolar-calpain|cell proliferation-inducing protein 30|cell proliferation-inducing gene 30 protein|calpain-1 large subunit|calpain-1 catalytic subunit|calpain, large polypeptide L1|calpain mu-type|calcium-activated neutral proteinase 1|CANP 1|muCL|muCANP|CANPL1|CANP1|CANP|calpain 1, (mu/l) large subunit|CAPN1

**Accession ID** NP\_005177.2

**Blocking Peptide** EBP11989

**Immunogen** Peptide with sequence C-NASRRSEQFINLR, from the internal region of the protein sequence according to NP\_005177.2.

**Product Comments** Reported variants represent identical protein: NP\_001185797.1, NP\_005177.2, NP\_001185798.1.

**Peptide Sequence** C-NASRRSEQFINLR

**Purification Method** Purified from goat serum by ammonium sulphate precipitation followed by antigen affinity chromatography using the immunizing peptide.

<b>Shipping Instructions</b>	Refrigerated
<b>Predicted Species</b>	Human, Pig, Cow
<b>Reactive Species</b>	Human
<b>Human Gene ID</b>	823
<b>Product Grade</b>	<a href="https://prod-vector-labs-pimcore-assets.s3.us-east-1.amazonaws.com/assets/products/image/elite_medium.png">https://prod-vector-labs-pimcore-assets.s3.us-east-1.amazonaws.com/assets/products/image/elite_medium.png</a>
<b>IHC Results</b>	Paraffin embedded Human Kidney. Recommended concentration: 5µg/ml.
<b>ELISA</b>	
<b>Detection Limit</b>	Antibody detection limit dilution 1:128000.
<b>Western Blot</b>	Approx 80kDa band observed in Human Kidney lysates (calculated MW of 81.9kDa according to NP_005177.2). Recommended concentration: 0.3-1µg/ml. Primary incubation was 1 hour.
<b>Application Type</b>	Pep-ELISA, WB, IHC

## DOCUMENTS

- [Data Sheet](#)

## GALLERY IMAGES

