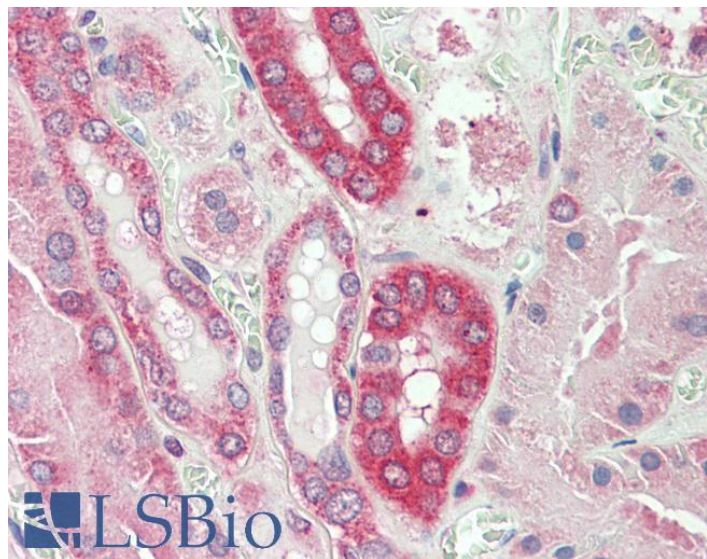


GOAT ANTI-CAPN1 ANTIBODY

SKU: EB11988



SPECIFICATIONS

Formulation Supplied at 0.5 mg/ml in Tris saline, 0.02% sodium azide, pH7.3 with 0.5% bovine serum albumin.

Unit Size 100 µg

Storage Instructions Aliquot and store at -20°C. Minimize freezing and thawing.

Synonym / Alias Names micromolar-calpain|cell proliferation-inducing protein 30|cell proliferation-inducing gene 30 protein|calpain-1 large subunit|calpain-1 catalytic subunit|calpain, large polypeptide L1|calpain mu-type|calcium-activated neutral proteinase 1|CANP 1|muCL|muCANP|CANPL1|CANP1|CANP|calpain 1, (mu/l) large subunit|CAPN1

Accession ID NP_005177.2

Blocking Peptide EBP11988

Immunogen Peptide with sequence C-SEKSAGTVELDD, from the internal region of the protein sequence according to NP_005177.2.

Product Comments Reported variants represent identical protein: NP_001185797.1, NP_005177.2, NP_001185798.1.

Peptide Sequence C-SEKSAGTVELDD

Purification Method Purified from goat serum by ammonium sulphate precipitation followed by antigen affinity chromatography using the immunizing peptide.

Shipping Instructions	Refrigerated
Predicted Species	Human
Reactive Species	Human
Human Gene ID	823
Product Grade	https://prod-vector-labs-pimcore-assets.s3.us-east-1.amazonaws.com/assets/products/image/elite_medium.png
IHC Results	Paraffin embedded Human Kidney. Recommended concentration: 5µg/ml.
ELISA	
Detection Limit	Antibody detection limit dilution 1:32000.
Western Blot	Approx 80kDa band observed in Human Kidney, Placenta and Spleen lysates (calculated MW of 81.9kDa according to NP_005177.2). Recommended concentration: 0.3-1µg/ml. Primary incubation was 1 hour.
Application Type	Pep-ELISA, WB, IHC

DOCUMENTS

- [Data Sheet](#)

GALLERY IMAGES

