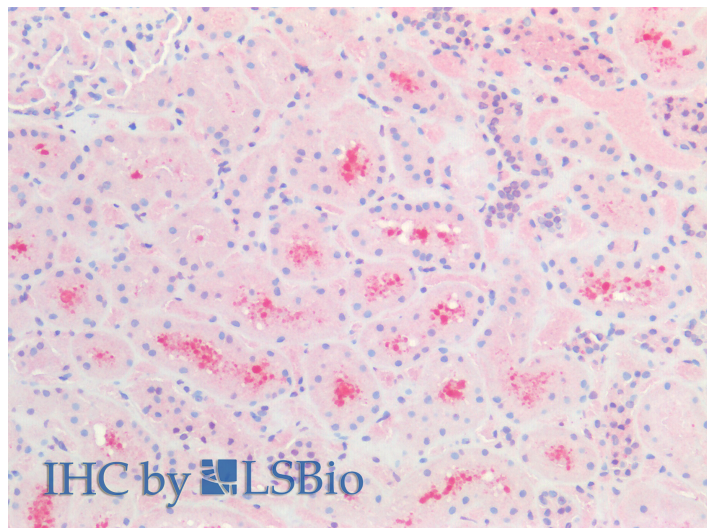


GOAT ANTI-CBR1 ANTIBODY

SKU: EB05515



SPECIFICATIONS

Formulation	Supplied at 0.5 mg/ml in Tris saline, 0.02% sodium azide, pH7.3 with 0.5% bovine serum albumin.
Unit Size	100 µg
Storage Instructions	Aliquot and store at -20°C. Minimize freezing and thawing.
Synonym / Alias Names	short chain dehydrogenase/reductase family 21C, member 1 SDR21C1 prostaglandin-E(2) 9-reductase prostaglandin 9-ketoreductase hCBR1 carbonyl reductase (NADPH) 1 carbonyl reductase (NADPH) CBR carbonyl reductase 1 CBR1
Usage Summary	Immunofluorescence: Strong expression of the protein seen in the cytoplasm of U251 cells.
Accession ID	NP_001748.1
Blocking Peptide	EBP05515
Immunogen	Peptide with sequence C-HGQFVSEKRVEQW, from the C Terminus of the protein sequence according to NP_001748.1.
Peptide Sequence	C-HGQFVSEKRVEQW
Purification Method	Purified from goat serum by ammonium sulphate precipitation followed by antigen affinity chromatography using the immunizing peptide.
Shipping Instructions	Refrigerated

Predicted Species	Human
Reactive Species	Human
Human Gene ID	873
Product Grade	https://prod-vector-labs-pimcore-assets.s3.us-east-1.amazonaws.com/assets/products/image/elite_plus_medium.png
IHC Results	Paraffin embedded Human Kidney. Recommended concentration: 5µg/ml.
ELISA	
Detection Limit	Antibody detection limit dilution 1:4000.
Western Blot	Approx 30-35kDa band observed in Human Liver lysates (calculated MW of 30.4kDa according to NP_001748.1). Recommended concentration: 0.03-0.1µg/ml. Primary incubation 1 hour at room temperature.
Application Type	Pep-ELISA, WB, IHC, IF

DOCUMENTS

- [Data Sheet](#)

GALLERY IMAGES

