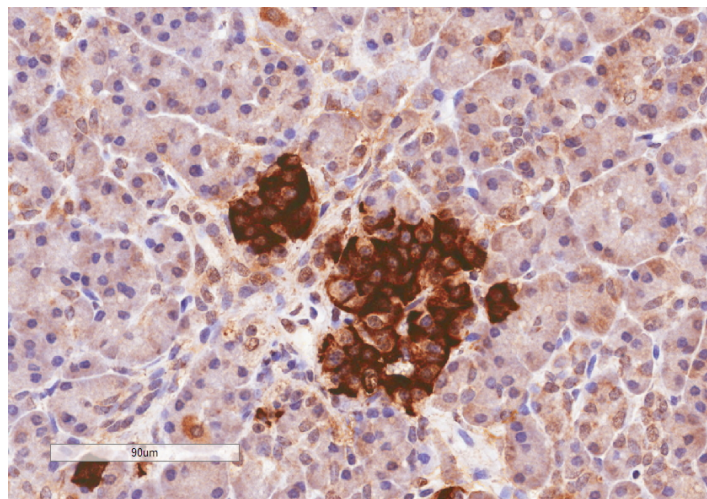


GOAT ANTI-CCKAR ANTIBODY

SKU: EB06768



SPECIFICATIONS

Formulation Supplied at 0.5 mg/ml in Tris saline, 0.02% sodium azide, pH7.3 with 0.5% bovine serum albumin.

Unit Size 100 µg

Storage Instructions Aliquot and store at -20°C. Minimize freezing and thawing.

Synonym / Alias Names cholecystokinin type-A receptor|cholecystokinin-1 receptor|CCKRA|CCK1-R|CCK-A|HGNC:1570|cholecystokinin A receptor|CCKAR

Accession ID NP_000721.1

Blocking Peptide EBP06768

Immunogen Peptide with sequence C-FEASQKKSARKPST, from the internal region of the protein sequence according to NP_000721.1.

Peptide Sequence C-FEASQKKSARKPST

Purification Method Purified from goat serum by ammonium sulphate precipitation followed by antigen affinity chromatography using the immunizing peptide.

Shipping Instructions Refrigerated

Predicted Species Human

Reactive Species	Human
Human Gene ID	886
Mouse Gene ID	12425
Rat Gene ID	24889
Product Grade	https://prod-vector-labs-pimcore-assets.s3.us-east-1.amazonaws.com/assets/products/image/elite_medium.png
IHC Results	In paraffin embedded Human Pancreas shows strong staining in Islets of Langerhans. Recommended concentration, 2-4µg/ml.
ELISA	
Detection Limit	Antibody detection limit dilution 1:128000.
Application Type	Pep-ELISA, IHC

SELECTED REFERENCES

[{"pmid": 19959964, "intro": "**This antibody (previous batch) has been successfully used in ICC/IF on RIN-14B cells:**", "title": "Control of somatostatin (SS) secretion by CCK-1 and CCK-2 receptors' occupation in RIN-14B cells, a rat pancreatic islet cell line.", "author": "El-Kouhen K, Morisset J.", "journal": "Pancreas. 2010 Mar;39(2):127-34."}]

DOCUMENTS

- [Data Sheet](#)

GALLERY IMAGES

