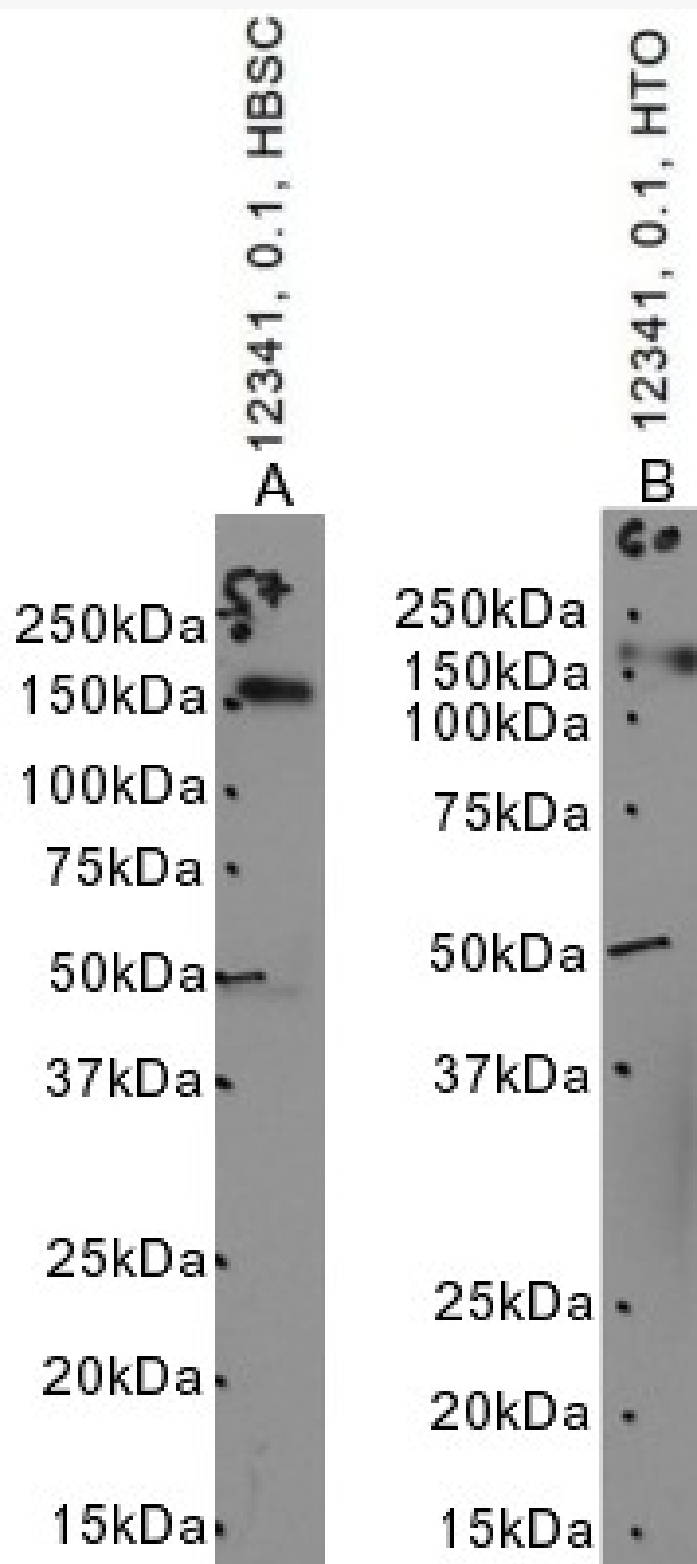


GOAT ANTI-CD163 (AA871-882) ANTIBODY

SKU: EB12341



SPECIFICATIONS

Formulation	Supplied at 0.5 mg/ml in Tris saline, 0.02% sodium azide, pH7.3 with 0.5% bovine serum albumin.
Unit Size	100 µg
Storage Instructions	Aliquot and store at -20°C. Minimize freezing and thawing.
Synonym / Alias Names	scavenger receptor cysteine-rich type 1 protein M130 macrophage-associated antigen hemoglobin scavenger receptor MM130 M130 CD163 molecule CD163
Accession ID	NP_004235.4; NP_981961.2
Blocking Peptide	EBP12341
Immunogen	Peptide with sequence C-DKGKINPASLDK, from the internal region of the protein sequence according to NP_004235.4; NP_981961.2.
Product Comments	This antibody is expected to recognize both reported isoforms (NP_004235.4; NP_981961.2).
Peptide Sequence	C-DKGKINPASLDK
Purification Method	Purified from goat serum by ammonium sulphate precipitation followed by antigen affinity chromatography using the immunizing peptide.
Shipping Instructions	Refrigerated
Predicted Species	Human
Reactive Species	Human
Human Gene ID	9332
Product Grade	https://prod-vector-labs-pimcore-assets.s3.us-east-1.amazonaws.com/assets/products/image/elite_medium.png
IHC Results	Paraffin embedded Human Spleen. Recommended concentration: 5µg/ml.
ELISA Detection Limit	Antibody detection limit dilution 1:128000.
Western Blot	Approx. 150kDa band observed in Human Spinal Cord and Tonsil lysates, and in preliminary testing of Human Bone Marrow lysate (calculated MW of 125kDa according to NP_004235.4). Molecular weights of 150-200kDa have been observed by other commercial sources. Recommended concentration: 0.03-0.1µg/ml. Primary incubation 1 hour at room temperature.
Application Type	Pep-ELISA, WB, IHC

GALLERY IMAGES

