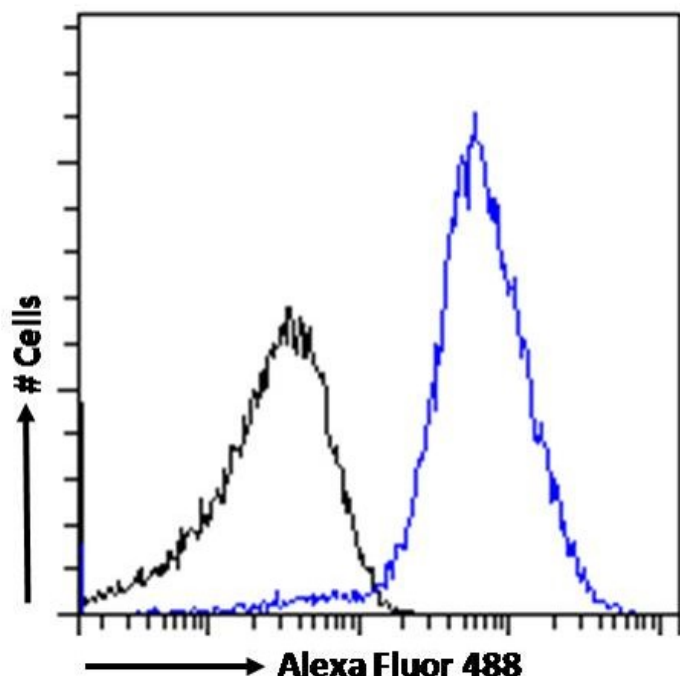


# GOAT ANTI-CD274 / PD-L1 ANTIBODY

SKU: EB06621



## SPECIFICATIONS

**Formulation** Supplied at 0.5 mg/ml in Tris saline, 0.02% sodium azide, pH7.3 with 0.5% bovine serum albumin.

**Unit Size** 100 µg

**Storage Instructions** Aliquot and store at -20°C. Minimize freezing and thawing.

**Synonym / Alias Names** MGC142296|MGC142294|CD274 molecule|CD274|HGNC:17635|PDL1|programmed cell death 1 ligand 1|PDCD1L1|PDL1|B7H1|B7-H|PDCD1LG1|PD-L1|CD274 antigen

**Usage Summary** **Immunofluorescence:** Strong expression of the protein seen in th membrane and cytoplasm of U2OS and A431 cells. Recommended concentration: 10µg/ml. **Flow Cytometry:** Flow cytometric analysis of Jurkat cells. Recommended concentration: 10ug/ml.

**Accession ID** NP\_054862.1; NP\_001254635.1

**Blocking Peptide** EBP06621

**Immunogen** Peptide with sequence CKKQSDTHLEET, from the C Terminus of the protein sequence according to NP\_054862.1; NP\_001254635.1.

<b>Product Comments</b>	This antibody is expected to recognize reported isoforms a and b (NP_054862.1; NP_001254635.1) only.
<b>Peptide Sequence</b>	CKKQSDTHLEET
<b>Purification Method</b>	Purified from goat serum by ammonium sulphate precipitation followed by antigen affinity chromatography using the immunizing peptide.
<b>Shipping Instructions</b>	Refrigerated
<b>Predicted Species</b>	Human
<b>Reactive Species</b>	Human
<b>Human Gene ID</b>	29126
<b>Product Grade</b>	<a href="https://prod-vector-labs-pimcore-assets.s3.us-east-1.amazonaws.com/assets/products/image/elite_plus_medium.png">https://prod-vector-labs-pimcore-assets.s3.us-east-1.amazonaws.com/assets/products/image/elite_plus_medium.png</a>
<b>ELISA Detection Limit</b>	Antibody detection limit dilution 1:128000.
<b>Western Blot</b>	Approx 50kDa band observed in Human Heart lysates and in lysates of cell line U2OS (calculated MW of 33.3kDa according to 1NP_054862.1). This band was successfully blocked by incubation with the immunizing peptide and is routinely observed by other sources. Recommended concentration: 0.01-0.1µg/ml. Primary incubation 1 hour at room temperature.
<b>Application Type</b>	Pep-ELISA, WB, IF, FC

## SELECTED REFERENCES

[{"pmid": 28026044, "intro": "**This antibody (previous batch) has been successfully used in Western blot on Human:**", "title": "Expression of programmed cell death-1 and its ligand B7 homolog 1 in peripheral blood lymphocytes from patients with peripartum cardiomyopathy.", "author": "Guozhi Xia, Xiaopu Zheng, Xinye Yao, Xiaowei Yao, Zhongwei Liu, Junkui Wang.", "journal": "Clin Cardiol. 2016 Dec 27."}, {"pmid": 21853301, "intro": "**This antibody (previous batch) has been successfully used in Western blot and IHC on Human:**", "title": "Upregulation of B7-H1 expression is associated with macrophage infiltration in hepatocellular carcinomas.", "author": "Chen J, Li G, Meng H, Fan Y, Song Y, Wang S, Zhu F, Guo C, Zhang L, Shi Y.", "journal": "Cancer Immunol Immunother. 2012 Jan;61(1):101-8."}]

## DOCUMENTS

- [Data Sheet](#)

## GALLERY IMAGES

