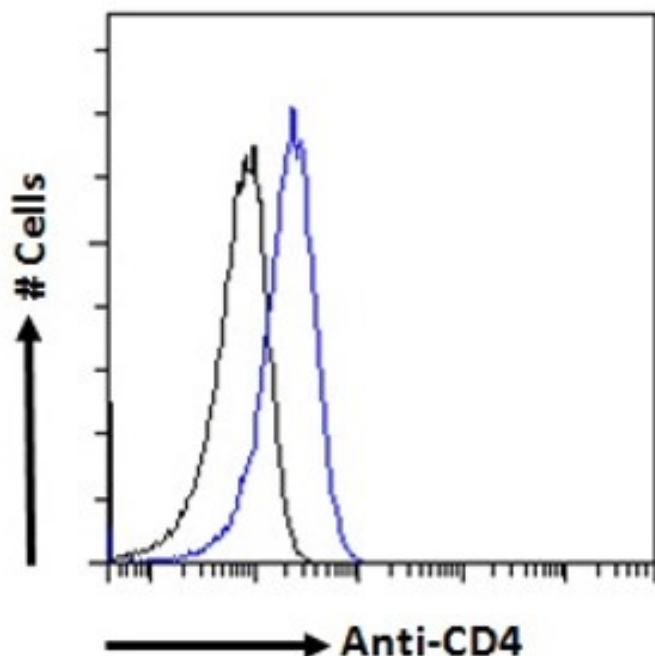


GOAT ANTI-CD4 ANTIBODY

SKU: EB12597



SPECIFICATIONS

Formulation	Supplied at 0.5 mg/ml in Tris saline, 0.02% sodium azide, pH7.3 with 0.5% bovine serum albumin.
Unit Size	100 µg
Storage Instructions	Aliquot and store at -20°C. Minimize freezing and thawing.
Synonym / Alias Names	T-cell surface glycoprotein CD4 T-cell surface antigen T4 Leu-3 CD4 receptor CD4 antigen (p55) CD4mut CD4 molecule CD4
Usage Summary	Flow Cytometry: Flow cytometric analysis of Jurkat cells. Recommended concentration: 10ug/ml.
Accession ID	NP_000607.1; NP_001181943.1
Blocking Peptide	EBP12597
Immunogen	Peptide with sequence C-KNKEVSVKRVTQDPK, from the internal region of the protein sequence according to NP_000607.1; NP_001181943.1.

Product Comments	This antibody is expected to recognize isoform 1 (NP_000607.1) and isoform 2 (NP_001181943.1).
Peptide Sequence	C-KNKEVSVKRVTQDPK
Purification Method	Purified from goat serum by ammonium sulphate precipitation followed by antigen affinity chromatography using the immunizing peptide.
Shipping Instructions	Refrigerated
Predicted Species	Human
Reactive Species	Human
Human Gene ID	920
Product Grade	https://prod-vector-labs-pimcore-assets.s3.us-east-1.amazonaws.com/assets/products/image/elite_plus_medium.png
IHC Results	Paraffin embedded Human Tonsil. Recommended concentration: 4µg/ml.
ELISA Detection Limit	Antibody detection limit dilution 1:128000.
Western Blot	Approx 30kDa band observed in Human Spleen and Bone Marrow lysates (calculated MW of 31.3kDa according to NP_001181943.1). Recommended concentration: 0.3-1µg/ml. Primary incubation 1 hour at room temperature.
Application Type	Pep-ELISA, WB, IHC, FC

DOCUMENTS

- [Data Sheet](#)

GALLERY IMAGES

