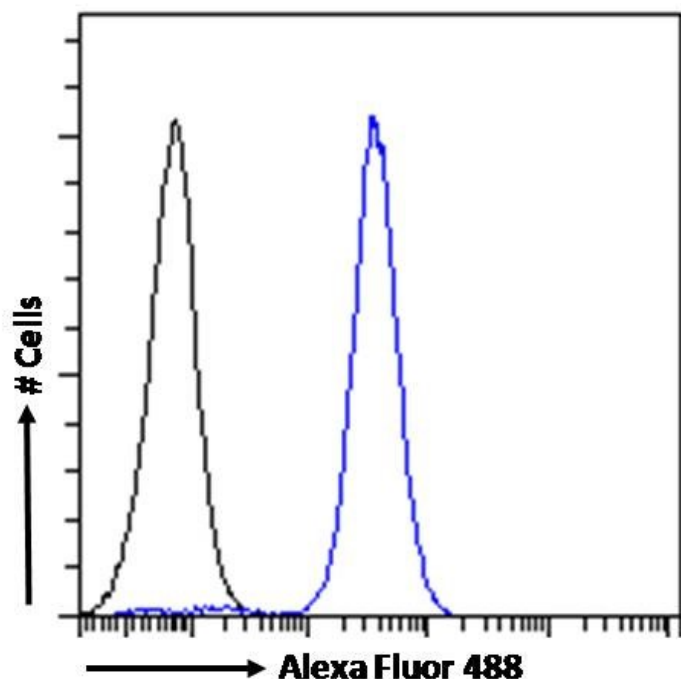


GOAT ANTI-CD56 / NCAM1 (ISOFORM 2) ANTIBODY

SKU: EB10948



SPECIFICATIONS

Formulation	Supplied at 0.5 mg/ml in Tris saline, 0.02% sodium azide, pH7.3 with 0.5% bovine serum albumin.
Unit Size	100 µg
Storage	
Instructions	Aliquot and store at -20°C. Minimize freezing and thawing.
Synonym / Alias	neural cell adhesion molecule, NCAM antigen recognized by monoclonal antibody 5.1H11 NCAM-1 N-CAM-1
Names	NCAM MSK39 CD56 neural cell adhesion molecule 1 NCAM1
Usage	<p>Flow Cytometry: Flow cytometric analysis of U251 cells. Recommended concentration:
Summary	10ug/ml.</p>
Accession ID	NP_851996.2
Blocking Peptide	EBP10948
Immunogen	Peptide with sequence C-KASWTRPEKQETLD, from the internal region of the protein sequence according to NP_851996.2.

Product Comments	This antibody is expected to recognize reported isoform 2 (NP_851996.2) only.
Peptide Sequence	C-KASWTRPEKQETLD
Purification Method	Purified from goat serum by ammonium sulphate precipitation followed by antigen affinity chromatography using the immunizing peptide.
Shipping Instructions	Refrigerated
Predicted Species	Human, Rat, Pig, Cow
Reactive Species	Human
Human Gene ID	4684
Rat Gene ID	24586
Product Grade	https://prod-vector-labs-pimcore-assets.s3.us-east-1.amazonaws.com/assets/products/image/elite_plus_medium.png
IHC Results	Paraffin embedded Human Adrenal Gland. Recommended concentration: 5µg/ml.
ELISA Detection Limit	Antibody detection limit dilution 1:32000.
Western Blot	Approx 150-170kDa band observed in Human Cerebellum and Frontal Cortex lysates (calculated MW of 94.6kDa according to NP_851996.2). The observed molecular weight corresponds to the glycosylated form and is routinely observed by other sources. Recommended concentration: 0.03-0.3µg/ml. Primary incubation 1 hour at room temperature.
Application Type	Pep-ELISA, WB, IHC, FC

DOCUMENTS

- [Data Sheet](#)

GALLERY IMAGES

