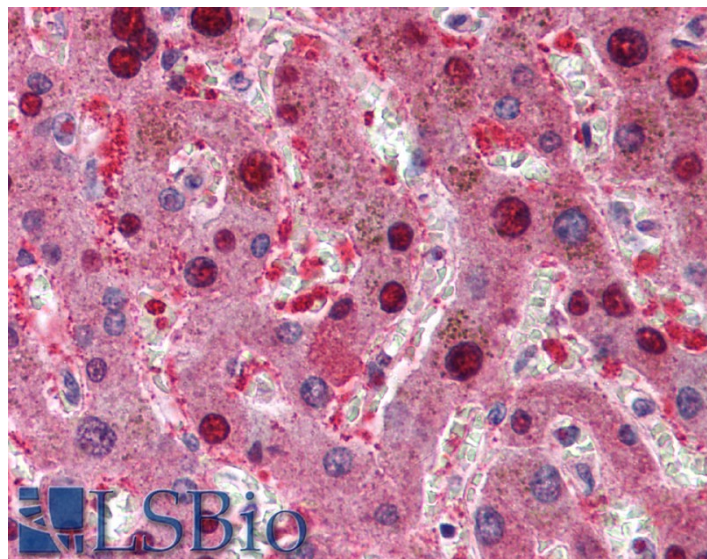


GOAT ANTI-CDKN2A (ISOFORM 1) / P16INK4A ANTIBODY

SKU: EB07094



SPECIFICATIONS

Formulation Supplied at 0.5 mg/ml in Tris saline, 0.02% sodium azide, pH7.3 with 0.5% bovine serum albumin.

Unit Size 100 µg

Storage Instructions Aliquot and store at -20°C. Minimize freezing and thawing.

Synonym / Alias Names cyclin-[cell cycle negative regulator beta|CDK4 inhibitor p16-INK4|p19|p16INK4|p16|p14ARF|p14|TP16|MTS1|MLM|INK4a|INK4|CMM2|CDKN2|CDK4|ARF|HGNC:1787|cyclin-dependent kinase inhibitor 2A (melanoma, p16, inhibits CDK4)|p16INK4a|CDKN2A

Accession ID NP_000068.1; NP_001182061.1

Blocking Peptide EBP07094

Immunogen Peptide with sequence C-HARIDAAEGPSDIPD, from the C Terminus of the protein sequence according to NP_000068.1; NP_001182061.1.

Product Comments This antibody is expected to recognise isoform p16INK4a (NP_000068.1) and isoform p16gamma (NP_001182061.1).

Peptide Sequence C-HARIDAAEGPSDIPD

Purification Method Purified from goat serum by ammonium sulphate precipitation followed by antigen affinity chromatography using the immunizing peptide.

Shipping Instructions	Refrigerated
Predicted Species	Human
Reactive Species	Human
Human Gene ID	1029
Product Grade	https://prod-vector-labs-pimcore-assets.s3.us-east-1.amazonaws.com/assets/products/image/elite_medium.png
IHC Results	Paraffin embedded Human Liver. Recommended concentration: 5µg/ml.
ELISA	
Detection Limit	Antibody detection limit dilution 1:32000.
Western Blot	Approx. 16-18kDa band observed in lysates of the cell lines A431 and HeLa (calculated MW of 16.5kDa according to NP_000068.1). Recommended concentration: 0.1-1µg/ml.
Application Type	Pep-ELISA, WB, IHC

DOCUMENTS

- [Data Sheet](#)

GALLERY IMAGES

