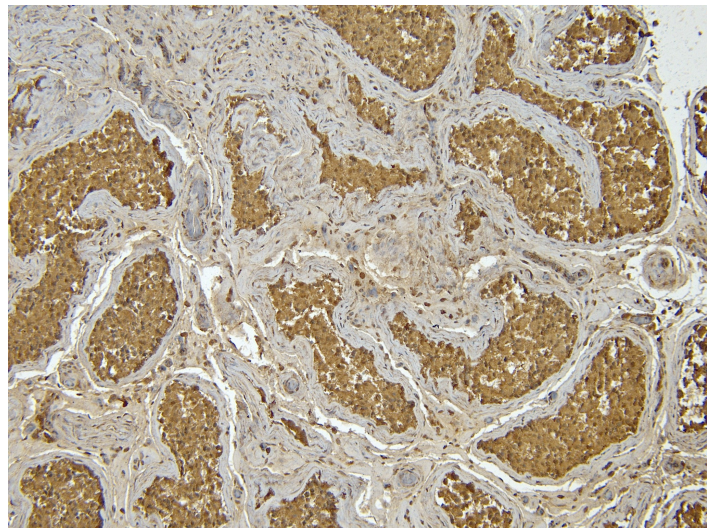


# GOAT ANTI-CENTROMERE PROTEIN F / MITOSIN ANTIBODY

**SKU:** EB05622



## SPECIFICATIONS

**Formulation** Supplied at 0.5 mg/ml in Tris saline, 0.02% sodium azide, pH7.3 with 0.5% bovine serum albumin.

**Unit Size** 100 µg

**Storage Instructions** Aliquot and store at -20°C. Minimize freezing and thawing.

**Synonym / Alias Names** mitosin|centromere protein F|hcp-1|RP11-262H5.1|centromere protein F, 350/400ka (mitosin)|cell-cycle-dependent 350K nuclear protein|centromere protein F (400kD)|CENP-F kinetochore protein|AH antigen|mitosin|PRO1779|CENF|centromere protein F (350/400kD, mitosin)|CENPF

**Accession ID** AAA82889.1; AAA82935.1; AAA86889.1

**Blocking Peptide** EBP05622

**Immunogen** Peptide with sequence GLESKGSENCKVQ, from the C Terminus of the protein sequence according to AAA82889.1; AAA82935.1; AAA86889.1.

**Product Comments** The immunizing peptide shows a K to N mismatch with the corresponding sequence of the NCBI-curated isoform NP\_057427.3.

**Peptide Sequence** GLESKGSENCKVQ

<b>Purification Method</b>	Purified from goat serum by ammonium sulphate precipitation followed by antigen affinity chromatography using the immunizing peptide.
<b>Shipping Instructions</b>	Refrigerated
<b>Predicted Species</b>	Human, Cow
<b>Reactive Species</b>	Human
<b>Human Gene ID</b>	1063
<b>Product Grade</b>	<a href="https://prod-vector-labs-pimcore-assets.s3.us-east-1.amazonaws.com/assets/products/image/elite_medium.png">https://prod-vector-labs-pimcore-assets.s3.us-east-1.amazonaws.com/assets/products/image/elite_medium.png</a>
<b>IHC Results</b>	Paraffin embedded Human Testis. Recommended concentration: 8µg/ml.
<b>ELISA</b>	
<b>Detection Limit</b>	Antibody detection limit dilution 1:1000.
<b>Application Type</b>	Pep-ELISA, IHC

## DOCUMENTS

- [Data Sheet](#)

## GALLERY IMAGES

