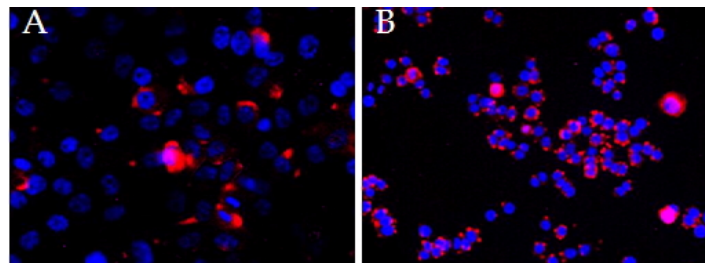


GOAT ANTI-CEP290 ANTIBODY

SKU: EB09122



SPECIFICATIONS

Formulation Supplied at 0.5 mg/ml in Tris saline, 0.02% sodium azide, pH7.3 with 0.5% bovine serum albumin.

Unit Size 100 µg

Storage Instructions Aliquot and store at -20°C. Minimize freezing and thawing.

Synonym / Alias Names prostate cancer antigen T21|nephrocytin-6|monoclonal antibody 3H11 antigen|CTCL tumor antigen se2-2|3H11Ag, BBS14, FLJ13615, FLJ21979, JBTS5, JBTS6, KIAA0373, LCA10, MKS4, NPHP6, SLSN6, rd16|centrosomal protein 290kDa|CEP290

Usage Summary **Immunocytochemistry:** Formaldehyde-fixed cell lines derived from Prostate Cancer and from Breast Cancer show typical centrosomal staining. Recommended concentration: 2-3ug/ml.

Accession ID NP_079390.3

Blocking Peptide EBP09122

Immunogen Peptide with sequence C-RNSKHLKQQQYRAEN, from the internal region of the protein sequence according to NP_079390.3.

Product Comments Despite similarity of the immunizing peptide with the mouse protein, this antibody was demonstrated to weak for mouse Cep290.

Peptide Sequence C-RNSKHLKQQQYRAEN

Purification Method Purified from goat serum by ammonium sulphate precipitation followed by antigen affinity chromatography using the immunizing peptide.

Shipping Instructions Refrigerated

Predicted Species Human

Reactive Species Human

Human Gene ID	80184
Mouse Gene ID	216274
Product Grade	https://prod-vector-labs-pimcore-assets.s3.us-east-1.amazonaws.com/assets/products/image/elite_medium.png
IHC Results	Paraffin embedded Human Prostate. Recommended concentration: 5-7µg/ml.
ELISA	
Detection Limit	Antibody detection limit dilution 1:128000.
Application Type	Pep-ELISA, IHC, ICC

SELECTED REFERENCES

[{"pmid": 0, "intro": "", "title": "", "author": "", "journal": ""}]

DOCUMENTS

- [Data Sheet](#)

GALLERY IMAGES

