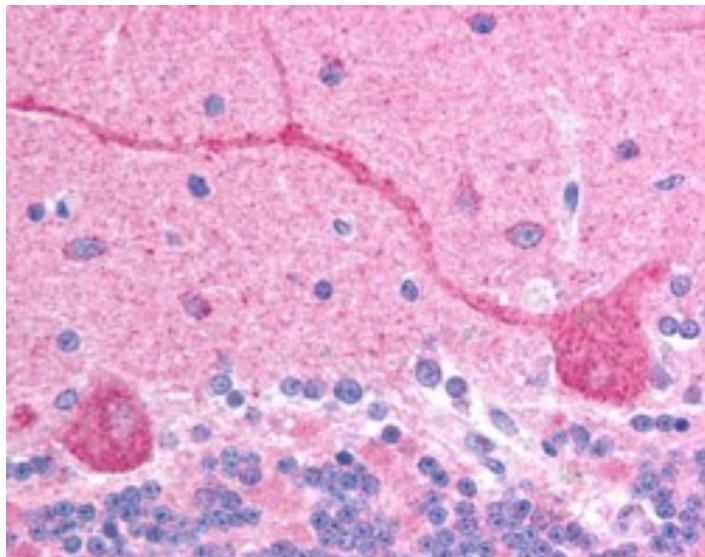


GOAT ANTI-CHFR ANTIBODY

SKU: EB05819



SPECIFICATIONS

| | |
|------------------------------|--|
| Formulation | Supplied at 0.5 mg/ml in Tris saline, 0.02% sodium azide, pH7.3 with 0.5% bovine serum albumin. |
| Unit Size | 100 µg |
| Storage Instructions | Aliquot and store at -20°C. Minimize freezing and thawing. |
| Synonym / Alias Names | RING finger protein 196 E3 ubiquitin-protein ligase CHFR RNF196 RNF116 FLJ33629 FLJ10796 checkpoint with forkhead and ring finger domains CHFR |
| Accession ID | NP_001154816.1; NP_001154817.1; NP_001154818.1; NP_060693.2; NP_001154819.1 |
| Blocking Peptide | EBP05819 |
| Immunogen | Peptide with sequence KFNHICEQTRFKN, from the C Terminus of the protein sequence according to NP_001154816.1; NP_001154817.1; NP_001154818.1; NP_060693.2; NP_001154819.1. |
| Product Comments | This antibody is expected to recognise all reported isoforms. |
| Peptide Sequence | KFNHICEQTRFKN |
| Purification Method | Purified from goat serum by ammonium sulphate precipitation followed by antigen affinity chromatography using the immunizing peptide. |

| | |
|------------------------------|---|
| Shipping Instructions | Refrigerated |
| Predicted Species | Human, Mouse, Rat, Pig Cow |
| Reactive Species | Human |
| Human Gene ID | 55743 |
| Mouse Gene ID | 231600 |
| Rat Gene ID | 288734 |
| Product Grade | https://prod-vector-labs-pimcore-assets.s3.us-east-1.amazonaws.com/assets/products/image/elite_medium.png |
| IHC Results | In paraffin embedded Human Brain (Cerebellum) shows stained Purkinje cells. Recommended concentration: 2.5µg/ml. |
| ELISA Detection Limit | Antibody detection limit dilution 1:64000. |
| Western Blot | Preliminary experiments gave an approx 80kDa band in human brain lysates at 0.5ug/ml, this band was successfully blocked by incubation with the immunising peptide. Please note that currently we cannot find an explanation in the literature for the band we observe given the predicted size of approx. 72kDda according to NP_060693. |
| Application Type | Pep-ELISA, IHC |

DOCUMENTS

- [Data Sheet](#)

GALLERY IMAGES

