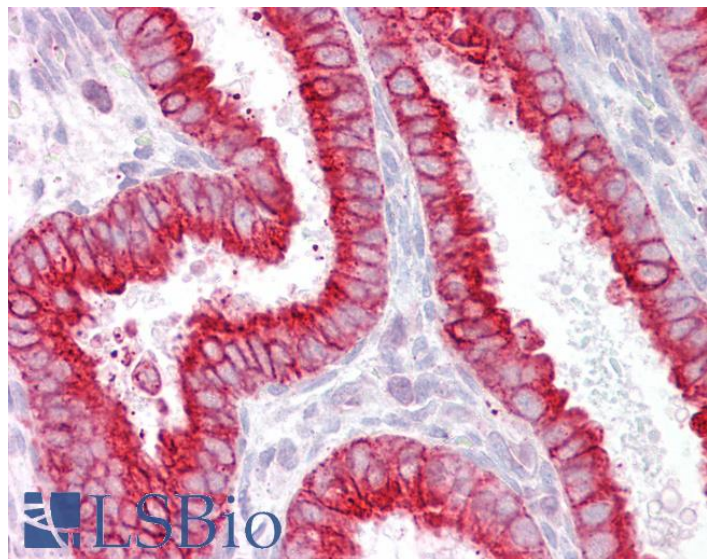


# GOAT ANTI-CHRNA2 ANTIBODY

**SKU:** EB08480



## SPECIFICATIONS

**Formulation** Supplied at 0.5 mg/ml in Tris saline, 0.02% sodium azide, pH7.3 with 0.5% bovine serum albumin.

**Unit Size** 100 µg

**Storage Instructions** Aliquot and store at -20°C. Minimize freezing and thawing.

**Synonym / Alias Names** neuronal nicotinic acetylcholine receptor beta 2|cholinergic receptor, nicotinic, beta polypeptide 2 (neuronal)|nAChRB2|EFNL3|cholinergic receptor, nicotinic, beta 2 (neuronal)|CHRNA2

**Accession ID** NP\_000739.1

**Blocking Peptide** EBP08480

**Immunogen** Peptide with sequence QPRHHCARQRLR, from the internal region of the protein sequence according to NP\_000739.1.

**Peptide Sequence** QPRHHCARQRLR

**Purification Method** Purified from goat serum by ammonium sulphate precipitation followed by antigen affinity chromatography using the immunizing peptide.

**Shipping Instructions** Refrigerated

<b>Predicted Species</b>	Human, Mouse, Rat, Dog, Pig, Cow
<b>Reactive Species</b>	Human
<b>Human Gene ID</b>	1141
<b>Product Grade</b>	<a href="https://prod-vector-labs-pimcore-assets.s3.us-east-1.amazonaws.com/assets/products/image/elite_medium.png">https://prod-vector-labs-pimcore-assets.s3.us-east-1.amazonaws.com/assets/products/image/elite_medium.png</a>
<b>IHC Results</b>	Paraffin embedded Human Uterus. Recommended concentration: 2.5µg/ml.
<b>ELISA Detection Limit</b>	Antibody detection limit dilution 1:64000.
<b>Western Blot</b>	Approx. 40-48 kDa band observed in Human Brain (Cerebellum,) lysates (calculated MW of 57.0 kDa according to NP_000739.1). This molecular weight is routinely observed by other sources. Recommended concentration: 1-3µg/ml. Primary incubation 1 hour at room temperature.
<b>Application Type</b>	Pep-ELISA, WB, IHC

## DOCUMENTS

- [Data Sheet](#)

## GALLERY IMAGES

