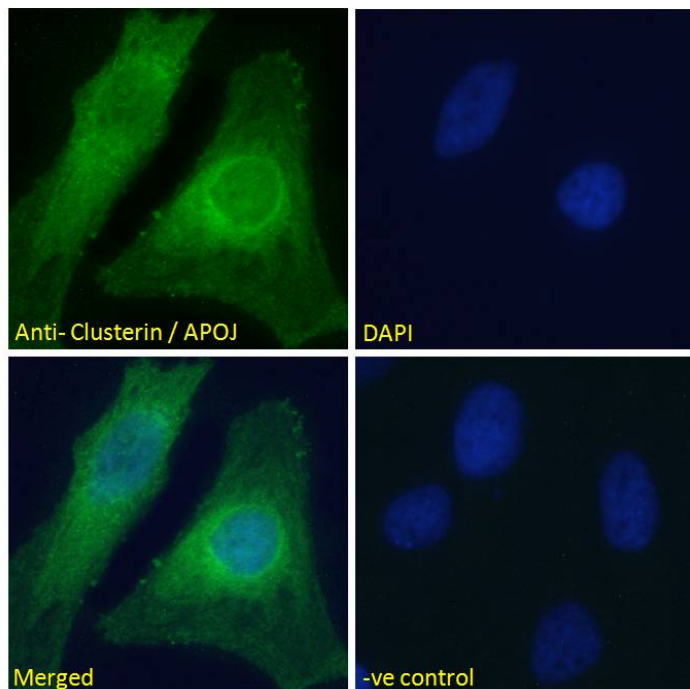


GOAT ANTI-CLUSTERIN / APOJ ANTIBODY

SKU: EB06929



SPECIFICATIONS

Formulation Supplied at 0.5 mg/ml in Tris saline, 0.02% sodium azide, pH7.3 with 0.5% bovine serum albumin.

Unit Size 100 µg

Storage Instructions Aliquot and store at -20°C. Minimize freezing and thawing.

Synonym / Alias Names clusterin (complement lysis inhibitor, SP-40, 40, sulfated glycoprotein 2, testosterone-repressed prostate message 2, apolipoprotein J)|aging-associated protein 4|KUB1|AAG4|sulfated glycoprotein 2|complement-associated protein SP-40|clusterin|apolipoprotein J|TRPM2|TRPM-2|SP-40|SGP2|SGP-2|MGC24903|CLI|HGNC:2095|apolipoprotein J|testosterone-repressed prostate message 2|sulfated glycoprotein 2|SP-40, 40|complement lysis inhibitor|CLU|clusterin|APOJ

Usage **Immunofluorescence:** Strong expression of the protein seen in the cytoplasm of HeLa cells.

Summary Recommended concentration: 10µg/ml

Accession ID NP_001822.2; NP_976084.1

Blocking Peptide EBP06929

Immunogen	Peptide with sequence C-EKALQEYRKKHREE, from the C Terminus of the protein sequence according to NP_001822.2; NP_976084.1.
Product Comments	This antibody is expected to recognise both reported isoforms (NP_001822.2 and NP_976084.1)
Peptide Sequence	C-EKALQEYRKKHREE
Purification Method	Purified from goat serum by ammonium sulphate precipitation followed by antigen affinity chromatography using the immunizing peptide.
Shipping Instructions	Refrigerated
Predicted Species	Human, Dog
Reactive Species	Human
Human Gene ID	1191
Product Grade	https://prod-vector-labs-pimcore-assets.s3.us-east-1.amazonaws.com/assets/products/image/elite_plus_medium.png
IHC Results	Paraffin embedded Human Tonsil. Recommended concentration: 2.5µg/ml.
ELISA Detection Limit	Antibody detection limit dilution 1:64000.
Western Blot	Approx 35-37kDa band observed in Human Colon and Prostate lysates (calculated MW of 57.8kDa according to NP_NP_001822.2 and 52.5 according to NP_976084.1). The observed molecular weight corresponds to earlier findings in literature (PMID: 9713325 and PMID: 11560857). Recommended concentration: 0.03-0.1µg/ml. Primary incubation was 1 hour.
Application Type	Pep-ELISA, WB, IF, IHC

DOCUMENTS

- [Data Sheet](#)

GALLERY IMAGES

