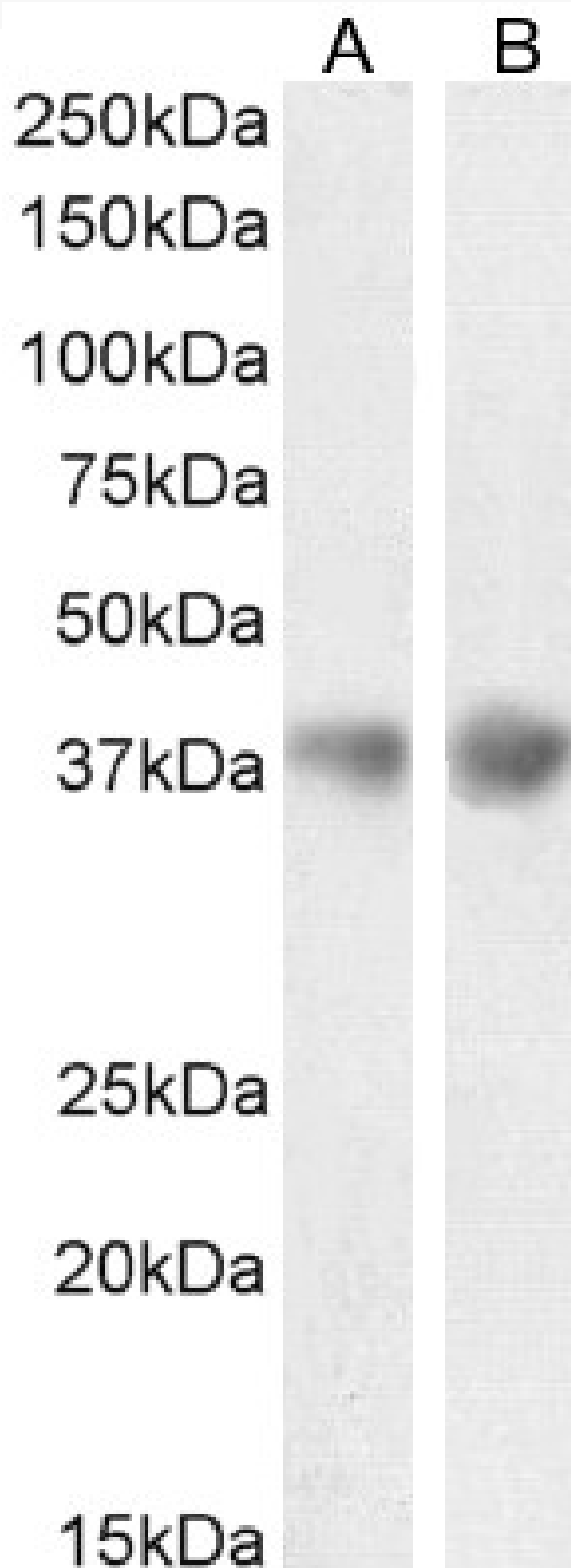


GOAT ANTI-CLUSTERIN / APOJ (MOUSE) ANTIBODY

SKU: EB08920



SPECIFICATIONS

Formulation Supplied at 0.5 mg/ml in Tris saline, 0.02% sodium azide, pH7.3 with 0.5% bovine serum albumin.

Unit Size 100 µg

Storage Instructions Aliquot and store at -20°C. Minimize freezing and thawing.

Synonym / Alias Names testosterone repressed prostate message|complement lysis inhibitor|Apolipoprotein J|Sugp-2|Sgp2|Sgp-2|SP-40|D14Ucla3|Cli|AI893575|Clu|clusterin|ApoJ

Usage Summary Immunofluorescence: Strong expression of the protein seen in the membranes and cytoplasm of PC12 cells. Recommended concentration: 10µg/ml.

Accession ID NP_038520.2

Blocking Peptide EBP08920

Immunogen Peptide with sequence C-EKALQEYRRKSRAE, from the C Terminus of the protein sequence according to NP_038520.2.

Peptide Sequence C-EKALQEYRRKSRAE

Purification Method Purified from goat serum by ammonium sulphate precipitation followed by antigen affinity chromatography using the immunizing peptide.

Shipping Instructions Refrigerated

Predicted Species Mouse, Rat

Reactive Species Mouse, Rat

Mouse Gene ID 12759

Rat Gene ID 24854

Product Grade https://prod-vector-labs-pimcore-assets.s3.us-east-1.amazonaws.com/assets/products/image/elite_medium.png

ELISA Detection Limit Antibody detection limit dilution 1:64000.

Western Blot Approx. 38kDa band observed in Mouse and Rat Brain lysates.(calculated MW of 51.7kDa according to Mouse NP_038520.2 and 51.4kDa according to Rat XP_006252156.1). This molecular weight is routinely observed by other sources and thought to correspond to the alpha chain of APOJ. Recommended concentration: 0.1-0.3µg/ml. Primary incubation 1 hour at room temperature.

Application Type Pep-ELISA, WB, IF

DOCUMENTS

- [Data Sheet](#)

GALLERY IMAGES

