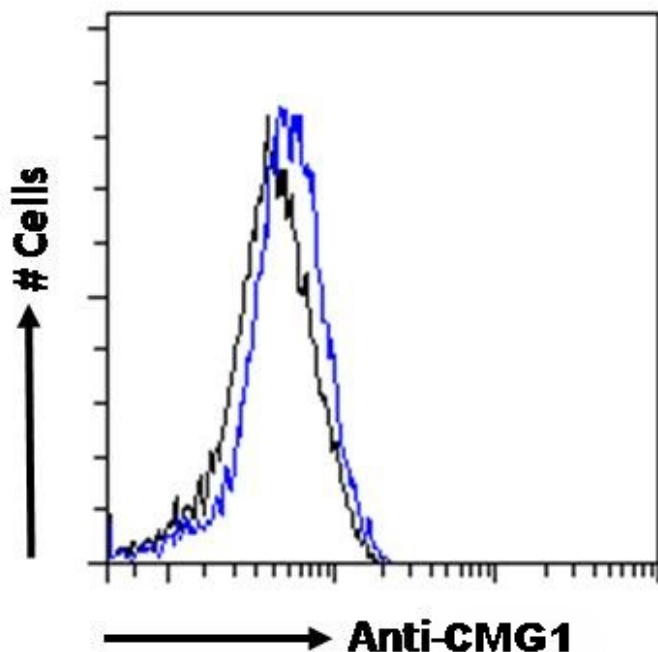


GOAT ANTI-CMG1 / CCDC2 / IFT74 ANTIBODY

SKU: EB08550



SPECIFICATIONS

Formulation Supplied at 0.5 mg/ml in Tris saline, 0.02% sodium azide, pH7.3 with 0.5% bovine serum albumin.

Unit Size 100 µg

Storage Instructions Aliquot and store at -20°C. Minimize freezing and thawing.

Synonym / Alias Names CMG1|CMG-1|CMG 1|Coiled-coil domain containing 2|Coiled-coil domain-containing protein 2|Capillary morphogenesis gene 1|Capillary morphogenesis protein 1|IFT74|intraflagellar transport 74 homolog|intraflagellar transport protein 74 homolog

Usage Summary **Immunofluorescence:** Strong expression of the protein seen in the cytoplasm and Golgi apparatus of U251 cells. Recommended concentration: 10µg/ml. **Flow Cytometry:** Flow cytometric analysis of U251 cells. Recommended concentration: 10ug/ml.

Accession ID NP_001092692.1; NP_001092693.1; NP_079379.2; AAK77221.1

Blocking Peptide EBP08550

Immunogen	Peptide with sequence CKTIVDALHSTSGN, from the C or N Terminus of the protein sequence according to NP_001092692.1; NP_001092693.1; NP_079379.2; AAK77221.1.
Peptide Sequence	CKTIVDALHSTSGN
Purification Method	Purified from goat serum by ammonium sulphate precipitation followed by antigen affinity chromatography using the immunizing peptide.
Shipping Instructions	Refrigerated
Predicted Species	Human
Reactive Species	Human
Human Gene ID	80173
Product Grade	https://prod-vector-labs-pimcore-assets.s3.us-east-1.amazonaws.com/assets/products/image/elite_medium.png
ELISA Detection Limit	Antibody detection limit dilution 1:32000.
Application Type	Pep-ELISA, IF, FC

DOCUMENTS

- [Data Sheet](#)

GALLERY IMAGES

