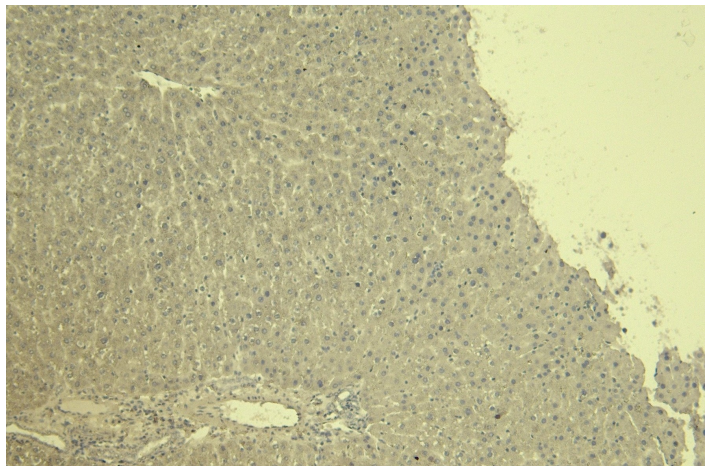


# GOAT ANTI-CONNECTIVE TISSUE GROWTH FACTOR ANTIBODY

**SKU:** EB06683



## SPECIFICATIONS

**Formulation** Supplied at 0.5 mg/ml in Tris saline, 0.02% sodium azide, pH7.3 with 0.5% bovine serum albumin.

**Unit Size** 100 µg

**Storage Instructions** Aliquot and store at -20°C. Minimize freezing and thawing.

**Synonym /**

**Alias** connective tissue growth factor|IGFBP8|NOV2|CCN2|CTGF

**Names**

**Usage Summary** **Immunofluorescence:** Strong expression of the protein seen in the cytoplasm of NIH3T3 cells. Recommended concentration: 5µg/ml.

**Accession ID** NP\_001892

**Blocking Peptide** EBP06683

**Immunogen** Peptide with sequence C-SLYYRKMYGDMA, from the C Terminus of the protein sequence according to NP\_001892.

**Peptide Sequence** C-SLYYRKMYGDMA

**Purification Method** Purified from goat serum by ammonium sulphate precipitation followed by antigen affinity chromatography using the immunizing peptide.

<b>Shipping Instructions</b>	Refrigerated
<b>Predicted Species</b>	Human, Mouse, Rat, Dog
<b>Reactive Species</b>	Mouse, Rat
<b>Human Gene ID</b>	1490
<b>Product Grade</b>	<a href="https://prod-vector-labs-pimcore-assets.s3.us-east-1.amazonaws.com/assets/products/image/elite_medium.png">https://prod-vector-labs-pimcore-assets.s3.us-east-1.amazonaws.com/assets/products/image/elite_medium.png</a>
<b>IHC Results</b>	Paraffin embedded Rat Liver. Recommended concentration: 6-8µg/ml.
<b>ELISA</b>	
<b>Detection Limit</b>	Antibody detection limit dilution 1:1000.
<b>Application Type</b>	Pep-ELISA, IF, IHC

## DOCUMENTS

- [Data Sheet](#)

## GALLERY IMAGES

