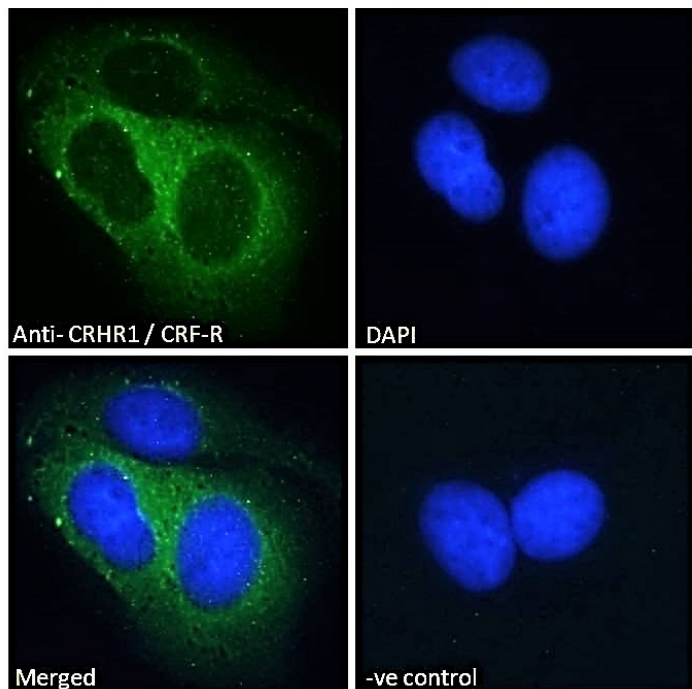


GOAT ANTI-CRHR1 / CRF-R (AA 250 - 263) ANTIBODY

SKU: EB07553



SPECIFICATIONS

Formulation Supplied at 0.5 mg/ml in Tris saline, 0.02% sodium azide, pH7.3 with 0.5% bovine serum albumin.

Unit Size 100 µg

Storage Instructions Aliquot and store at -20°C. Minimize freezing and thawing.

Synonym / Alias Names seven transmembrane helix receptor|corticotropin releasing hormone receptor variant 1h|CRHR1f|CRHR|CRH-R1h|CRFR1|CRF1|corticotropin releasing hormone receptor 1|CRF-R|CRHR1

Usage Summary **Immunofluorescence:** Expression of the protein seen in the cytoplasm and vesicles of MCF7 cells. Recommended concentration: 10µg/ml.

Accession ID NP_004373.2

Blocking Peptide EBP07553

Immunogen Peptide with sequence KLYYDNEKCWFGKR, from the internal region of the protein sequence according to NP_004373.2.

Peptide Sequence	KLYYDNEKCWFGKR
Purification Method	Purified from goat serum by ammonium sulphate precipitation followed by antigen affinity chromatography using the immunizing peptide.
Shipping Instructions	Refrigerated
Predicted Species	Human, Mouse, Rat, Dog, Cow, Sheep
Reactive Species	Human, Mouse
Human Gene ID	1394
Mouse Gene ID	12921
Rat Gene ID	58959
Product Grade	https://prod-vector-labs-pimcore-assets.s3.us-east-1.amazonaws.com/assets/products/image/elite_plus_medium.png
IHC Results	Paraffin embedded Human Brain (Cortex). Recommended concentration: 5µg/ml.
ELISA	
Detection Limit	Antibody detection limit dilution 1:1000.
Western Blot	This antibody has been successfully used in WB on Mouse: Hunt AJ Jr et al, Brain Struct Funct. 2018 Jul;223(6):2685-2698. PMID: 29569009.
Application Type	Pep-ELISA, WB, IF, IHC

SELECTED REFERENCES

[{"pmid": 31737064, "intro": "**This antibody has been successfully used on Rat:**", "title": "Electroacupuncture Regulates Disorders of Gut-Brain Interaction by Decreasing Corticotropin-Releasing Factor in a Rat Model of IBS", "author": "Ying Chen , Yan Zhao, Dan-ni Luo , Hui Zheng , Ying Li , and Si-yuan Zhou", "journal": "Gastroenterology Research and Practice Volume 2019, Article ID 1759842"}, {"pmid": 29569009, "intro": "**This antibody has been successfully used in Western blot on Mouse:**", "title": "Paraventricular hypothalamic and amygdalar CRF neurons synapse in the external globus pallidus.", "author": "Hunt AJ Jr, Dasgupta R, Rajamanickam S, Jiang Z, Beierlein M, Chan CS, Justice NJ", "journal": "Brain Struct Funct. 2018 Jul;223(6):2685-2698."}, {"pmid": 24155300, "intro": "**This antibody (previous batch) has been successfully used in ICC on Rat:**", "title": "NMDA Receptor Activation and Calpain Contribute to Disruption of Dendritic Spines by the Stress Neuropeptide CRH", "author": "Adrienne L. Andres, Limor Regev, Lucas Phi, Ronald R. Seese, Yuncai Chen, Christine M. Gall and Tallie Z. Baram", "journal": "J Neurosci. 2013 Oct 23;33(43):16945-60."}, {"pmid": 29352046, "intro": "**This antibody (previous batch) has been successfully used in IF on Mouse:**", "title": "Local Corticotropin-Releasing Factor Signaling in the Hypothalamic Paraventricular Nucleus.", "author": "Jiang Z, Rajamanickam S, Justice NJ.", "journal": "J Neurosci. 2018 Feb 21;38(8):1874-1890."}]

DOCUMENTS

- [Data Sheet](#)

GALLERY IMAGES

