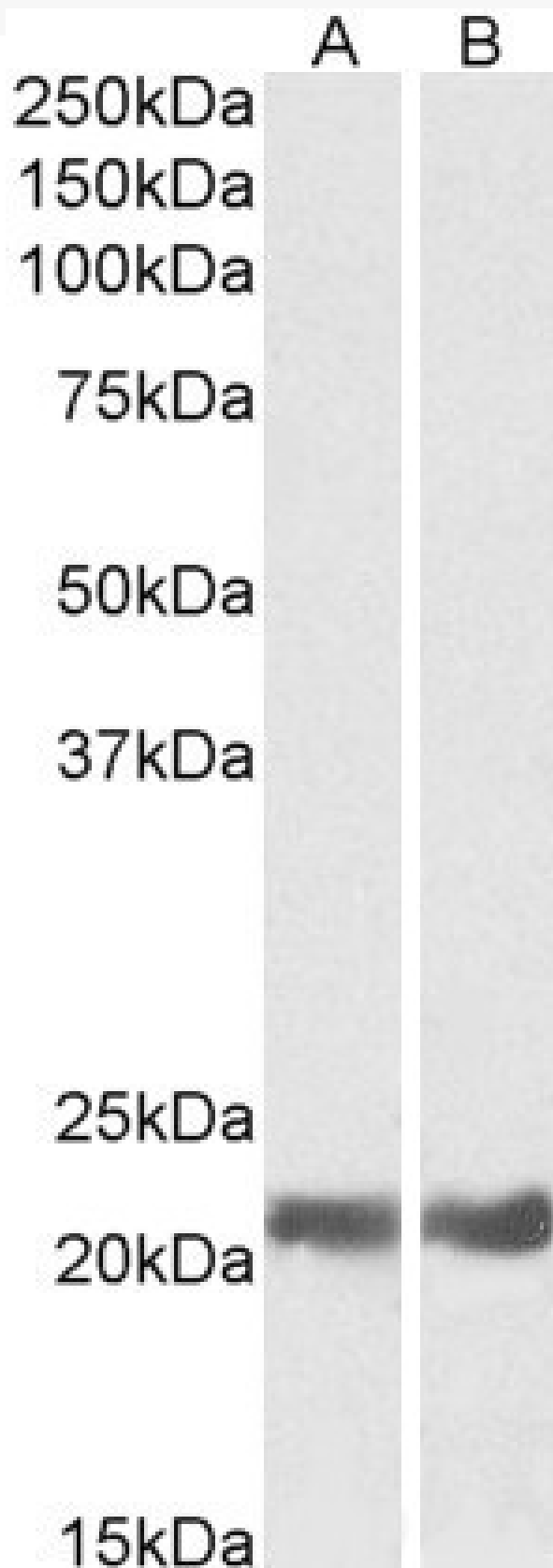


GOAT ANTI-CRYAB ANTIBODY

SKU: EB08149



SPECIFICATIONS

Formulation Supplied at 0.5 mg/ml in Tris saline, 0.02% sodium azide, pH7.3 with 0.5% bovine serum albumin.

Unit Size 100 µg

Storage Instructions Aliquot and store at -20°C. Minimize freezing and thawing.

Synonym /

Alias heat-shock 20 kD like-protein|HSPB5|CTPP2|CRYA2|crystallin, alpha B|CRYAB

Names

Accession ID NP_001876.1

Blocking Peptide EBP08149

Immunogen Peptide with sequence C-RLEKDRFSVNLD, from the internal region of the protein sequence according to NP_001876.1.

Peptide Sequence C-RLEKDRFSVNLD

Purification Method Purified from goat serum by ammonium sulphate precipitation followed by antigen affinity chromatography using the immunizing peptide.

Shipping Instructions Refrigerated

Predicted Species Human, Mouse, Rat

Reactive Species Mouse, Rat

Human Gene ID 1410

Mouse Gene ID 12955

Rat Gene ID 25420

Product Grade https://prod-vector-labs-pimcore-assets.s3.us-east-1.amazonaws.com/assets/products/image/elite_medium.png

ELISA

Detection Limit Antibody detection limit dilution 1:128000.

Western Blot Approx 22kDa band observed in Mouse and Rat Eye lysates (calculated MW of 20.1kDa according to Mouse NP_034094.1 and Rat NP_037067.1). Recommended concentration: 0.03-0.1-µg/ml.

Application Type Pep-ELISA, WB

DOCUMENTS

- [Data Sheet](#)

GALLERY IMAGES

