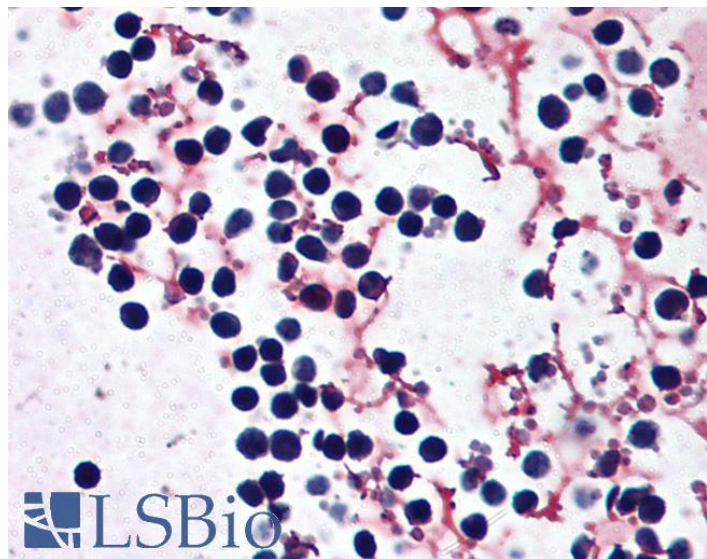


GOAT ANTI-CRYOPIRIN / NALP3 / NLRP3 ANTIBODY

SKU: EB09884



SPECIFICATIONS

Formulation	Supplied at 0.5 mg/ml in Tris saline, 0.02% sodium azide, pH7.3 with 0.5% bovine serum albumin.
Unit Size	100 µg
Storage Instructions	Aliquot and store at -20°C. Minimize freezing and thawing.
Synonym / Alias Names	NLRP3 NLR family, pyrin domain containing 3 NALP3 NACHT, LRR and PYD contain NACHT domain-, leucine-rich repeat-, and PYD-containing protein 3 MWS FLJ95925 FCU FCAS CLR1.1 CIAS1 C1orf7 AVP AII AVP receptor-like AII AVP AII AGTAVPRL
Accession ID	NP_004886.3; NP_899632.1; NP_001120933.1; NP_001120934.1
Blocking Peptide	EBP09884
Immunogen	Peptide with sequence RDLYEKAKRDEPK-C, from the N-Terminus (near) of the protein sequence according to NP_004886.3; NP_899632.1; NP_001120933.1; NP_001120934.1.
Product Comments	This antibody is expected to recognize all reported isoforms (NP_004886.3; NP_899632.1; NP_001120933.1; NP_001120934.1). Reported variants NP_001073289.1 and NP_004886.3 represent identical protein.
Peptide Sequence	RDLYEKAKRDEPK-C
Purification Method	Purified from goat serum by ammonium sulphate precipitation followed by antigen affinity chromatography using the immunizing peptide.

Shipping Instructions	Refrigerated
Predicted Species	Human
Reactive Species	Human
Human Gene ID	114548
Product Grade	https://prod-vector-labs-pimcore-assets.s3.us-east-1.amazonaws.com/assets/products/image/elite_medium.png
IHC Results	Paraffin embedded Human peripheral blood leukocytes. Recommended concentration: 5µg/ml.
ELISA	
Detection Limit	Antibody detection limit dilution 1:32000.
Western Blot	Preliminary experiments gave an approx 36kDa band in Human Peripheral Blood Mononucleocytes lysates and in lysates of cell line MOLT4, after 0.3-1µg/ml antibody staining. Please note that currently we cannot find an explanation in the literature for the band we observe given the smallest calculated size of 106kDa according to NP_899632.1. The 36kDa band was successfully blocked by incubation with the immunizing peptide.
Application Type	Pep-ELISA, IHC

DOCUMENTS

- [Data Sheet](#)

GALLERY IMAGES

